

Latest infection status, etc. (1)

○Trends in the number of new cases of infection

(Per 100,000 of the population)

	10/19-10/25			10/26-11/1			11/2-11/8		
Nationwide	1.64	(2,065)	↓	1.39	(1,756)	↓	1.05	(1,331)	↓
Hokkaido	1.45	(76)	↓	1.09	(57)	↓	1.39	(73)	↑
Saitama	1.16	(85)	↓	1.06	(78)	↓	0.56	(41)	↓
Chiba	1.10	(69)	↓	0.88	(55)	↓	0.94	(59)	↑
Tokyo	1.49	(207)	↓	1.18	(164)	↓	1.08	(150)	↓
Kanagawa	1.26	(116)	↓	0.82	(75)	↓	0.89	(82)	↑
Aichi	1.96	(148)	↓	1.77	(134)	↓	1.06	(80)	↓
Kyoto	2.05	(53)	↓	1.43	(37)	↓	0.97	(25)	↓
Osaka	4.08	(359)	↓	3.76	(331)	↓	2.66	(234)	↓
Hyogo	3.11	(170)	↓	2.36	(129)	↓	1.72	(94)	↓
Fukuoka	1.25	(64)	↓	1.20	(61)	↓	0.69	(35)	↓
Okinawa	7.43	(108)	↓	4.06	(59)	↓	3.37	(49)	↓

○Trends in the testing system

(Number of tests, positive rate)

	10/11-10/17			10/18-10/24			10/25-10/31		
Nationwide	338,281↓	1.1%	↓	326,520↓	0.7%	↓	322,194↓	0.6%	↓
Hokkaido	12,551↑	1.5%	↑	8,426↓	1.0%	↓	14,442↑	0.4%	↓
Saitama	21,021↓	0.9%	↓	24,104↑	0.4%	↓	23,304↓	0.3%	↓
Chiba	11,069↓	1.4%	↓	11,088↑	0.6%	↓	10,743↓	0.5%	↓
Tokyo	77,049↓	0.5%	↓	80,496↑	0.3%	↓	65,513↓	0.3%	↓
Kanagawa	18,072↓	1.7%	↓	18,351↑	0.7%	↓	17,929↓	0.4%	↓
Aichi	10,487↓	2.1%	↓	9,572↓	1.6%	↓	10,521↑	1.3%	↓
Kyoto	4,877↓	1.6%	↓	4,040↓	1.3%	↓	5,578↑	0.7%	↓
Osaka	49,334↓	1.2%	↓	42,377↓	0.9%	↓	50,122↑	0.7%	↓
Hyogo	8,017↓	2.6%	↑	8,108↑	2.0%	↓	9,478↑	1.5%	↓
Fukuoka	12,109↓	1.1%	↑	11,714↓	0.5%	↓	11,908↑	0.5%	↓
Okinawa	10,023↑	1.6%	↓	7,517↓	1.6%	↓	9,677↑	0.7%	↓

* ↑, ↓, and → indicate an increase, a decrease, and the same level, respectively, compared to the previous week.

Latest infection status, etc. (2)

○Trends in the number of inpatients

[No. of inpatients (Ratio to the no. of secured beds)]

	10/20		10/27		11/3
Nationwide	1,901 (4.8%) ↓		1,244 (3.1%) ↓		958 (2.4%) ↓
Hokkaido	57 (2.9%) ↑		48 (2.4%) ↓		23 (1.2%) ↓
Saitama	125 (7.0%) ↓		81 (4.6%) ↓		62 (3.5%) ↓
Chiba	107 (7.8%) ↓		50 (3.8%) ↓		35 (2.7%) ↓
Tokyo	266 (4.0%) ↓		165 (2.5%) ↓		128 (1.9%) ↓
Kanagawa	152 (7.6%) ↓		107 (5.4%) ↓		63 (3.2%) ↓
Aichi	78 (4.9%) ↓		53 (3.3%) ↓		32 (2.0%) ↓
Kyoto	27 (3.7%) ↓		30 (4.1%) ↑		17 (2.3%) ↓
Osaka	285 (8.3%) ↓		172 (5.0%) ↓		133 (3.9%) ↓
Hyogo	94 (6.9%) ↓		91 (6.7%) ↓		83 (6.1%) ↓
Fukuoka	60 (4.0%) ↓		38 (2.6%) ↓		25 (1.7%) ↓
Okinawa	40 (7.5%) ↓		32 (6.0%) ↓		11 (1.7%) ↓

○Trends in the number of severe patients

[No. of inpatients (Ratio to the no. of secured beds)]

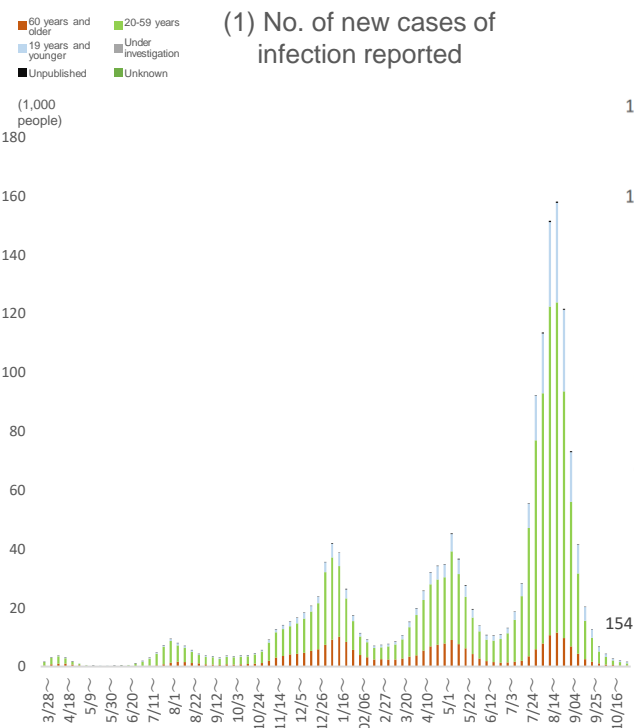
	10/20		10/27		11/3
Nationwide	294 (5.3%) ↓		195 (3.5%) ↓		139 (2.5%) ↓
Hokkaido	1 (0.7%) ↑		1 (0.7%) →		1 (0.7%) →
Saitama	22 (12.0%) ↓		20 (10.9%) ↓		15 (8.2%) ↓
Chiba	7 (6.5%) ↓		5 (4.7%) ↓		2 (1.9%) ↓
Tokyo	93 (7.7%) ↓		59 (4.9%) ↓		43 (3.6%) ↓
Kanagawa	14 (6.7%) ↓		14 (6.7%) →		8 (3.8%) ↓
Aichi	5 (2.9%) ↓		5 (2.9%) →		4 (2.3%) ↓
Kyoto	2 (1.2%) ↓		0 (0.0%) ↓		1 (0.6%) ↑
Osaka	100 (7.7%) ↓		51 (3.9%) ↓		42 (3.3%) ↓
Hyogo	8 (5.6%) ↓		7 (4.9%) ↓		3 (2.1%) ↓
Fukuoka	9 (4.4%) ↓		7 (3.4%) ↓		6 (3.0%) ↓
Okinawa	6 (9.5%) ↑		5 (7.9%) ↓		1 (1.7%) ↓

* "Trends in the numbers of inpatients" are based on the "Surveillance of the Status of Care for Patients with the Novel Coronavirus Infection and the Number of Beds," by the Ministry of Health, Labour and Welfare. In this surveillance, the results as of 0:00 on the presentation date are published.

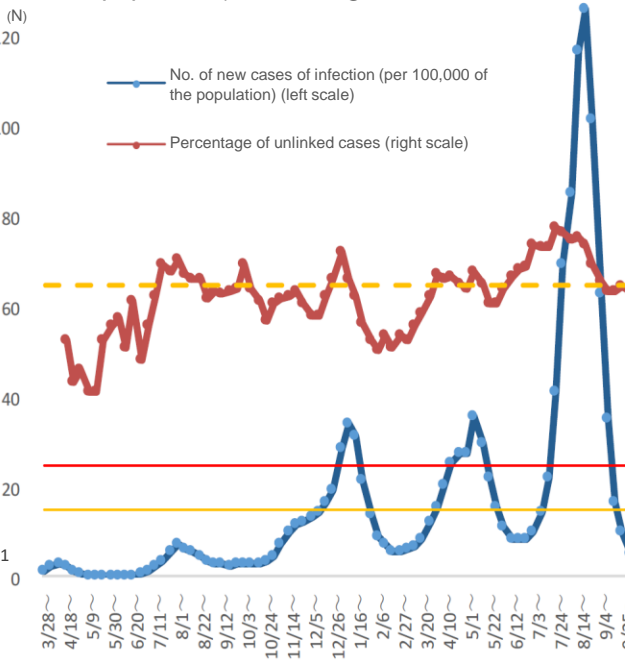
↑, ↓, and → indicate an increase, a decrease, and the same level, respectively, compared to the previous week.

Nationwide

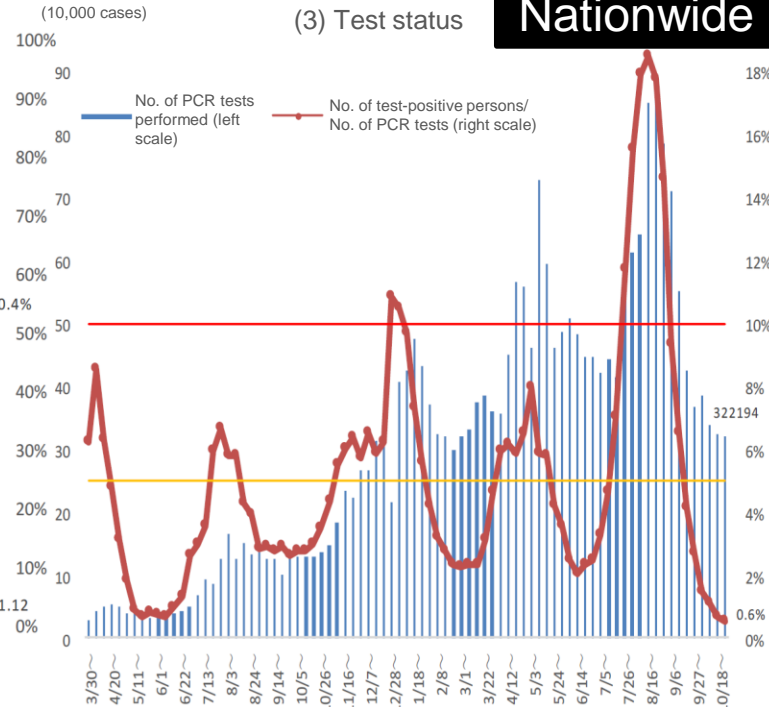
(1) No. of new cases of infection reported



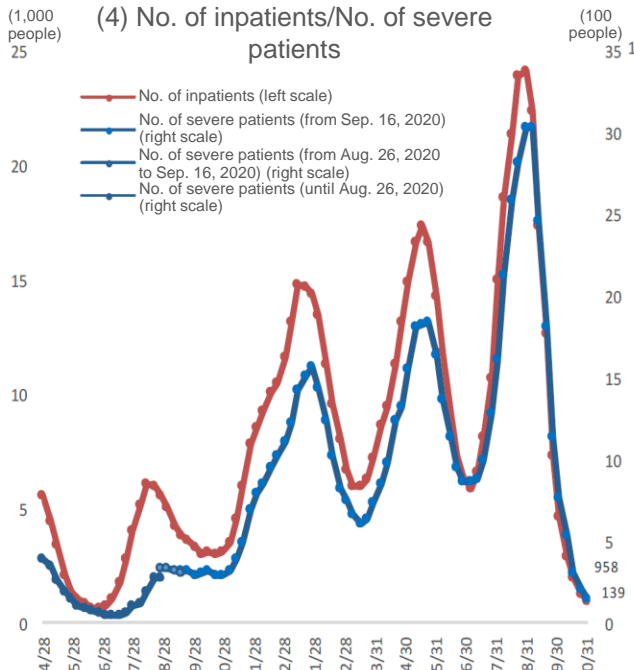
(2) No. of new cases of infection (per 100,000 of the population)/Percentage of unlinked cases



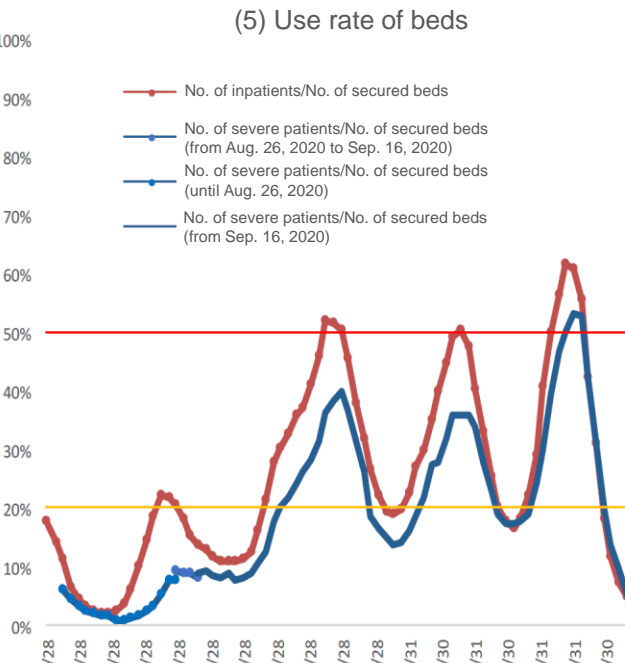
(3) Test status



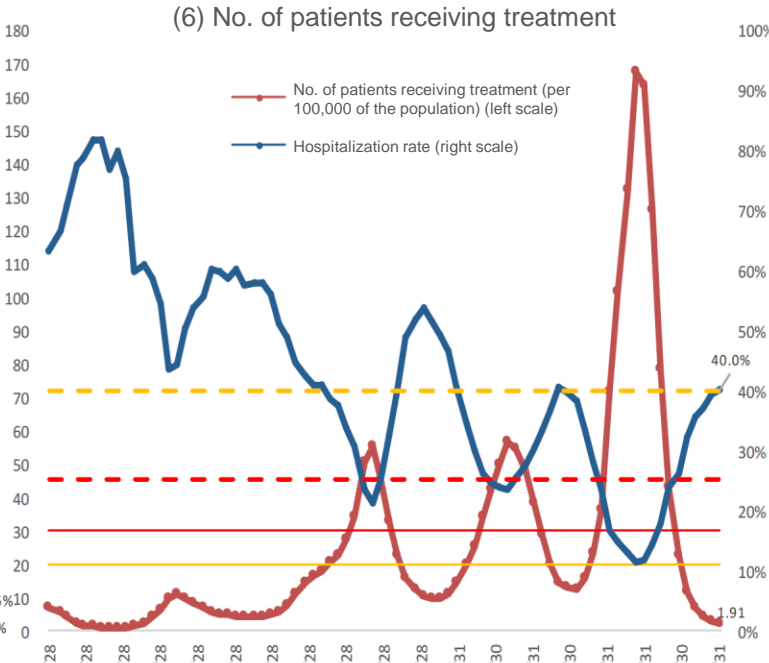
(4) No. of inpatients/No. of severe patients



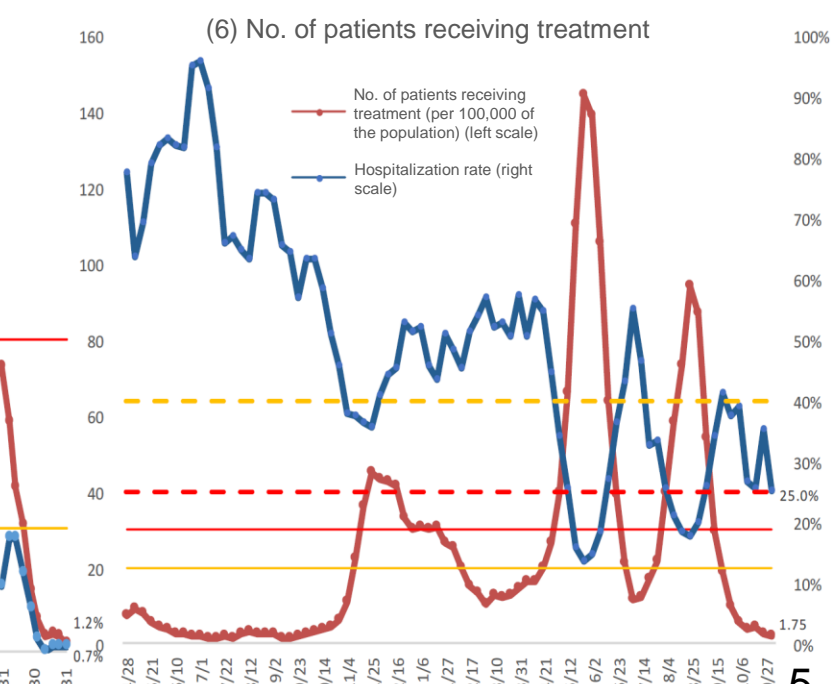
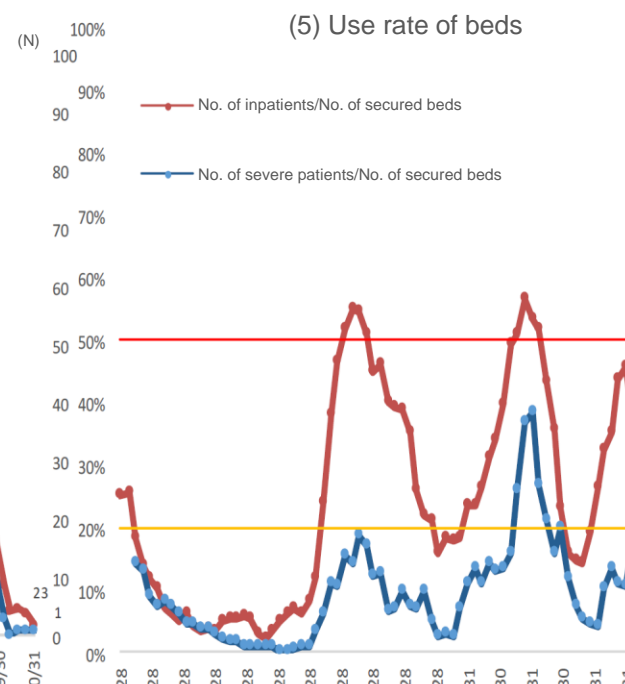
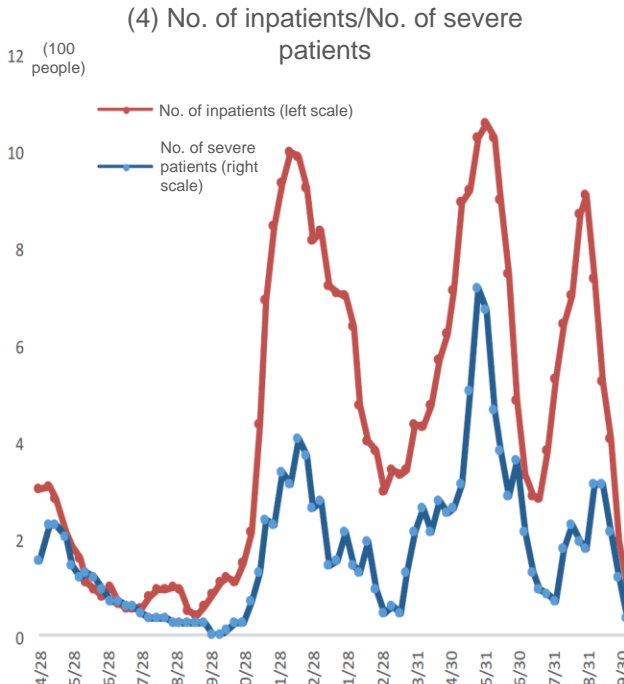
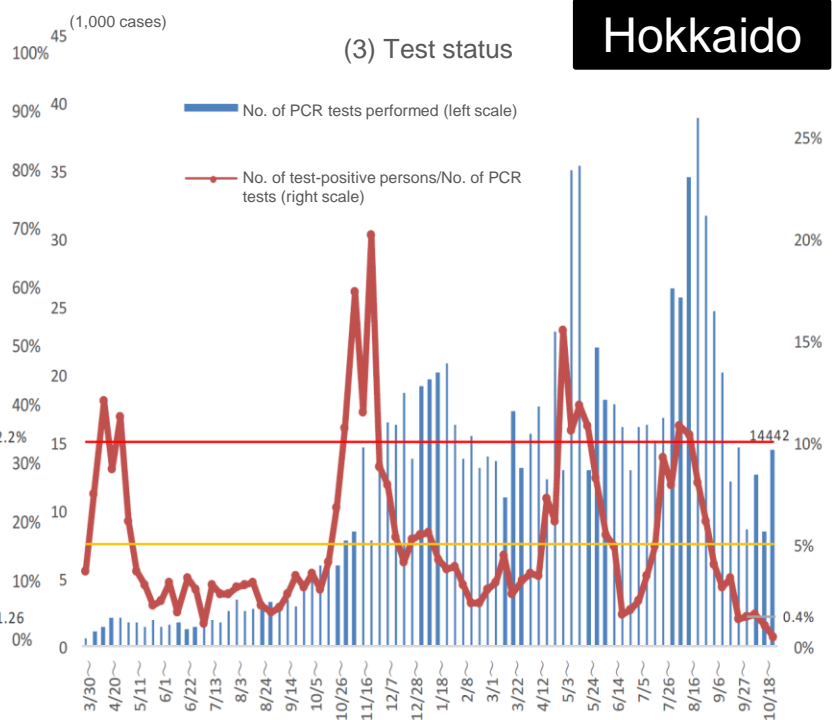
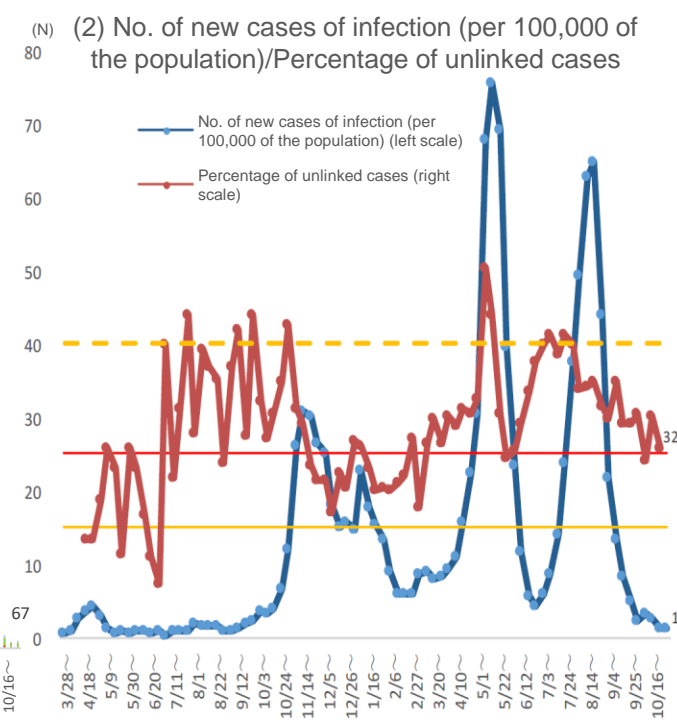
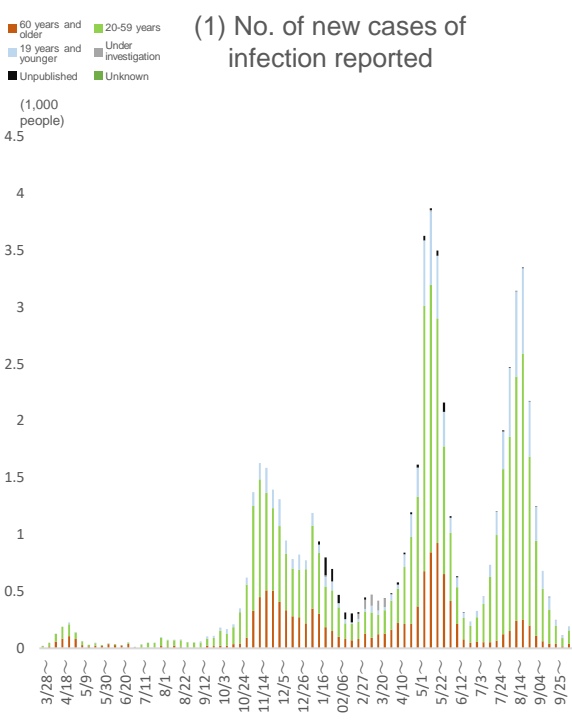
(5) Use rate of beds



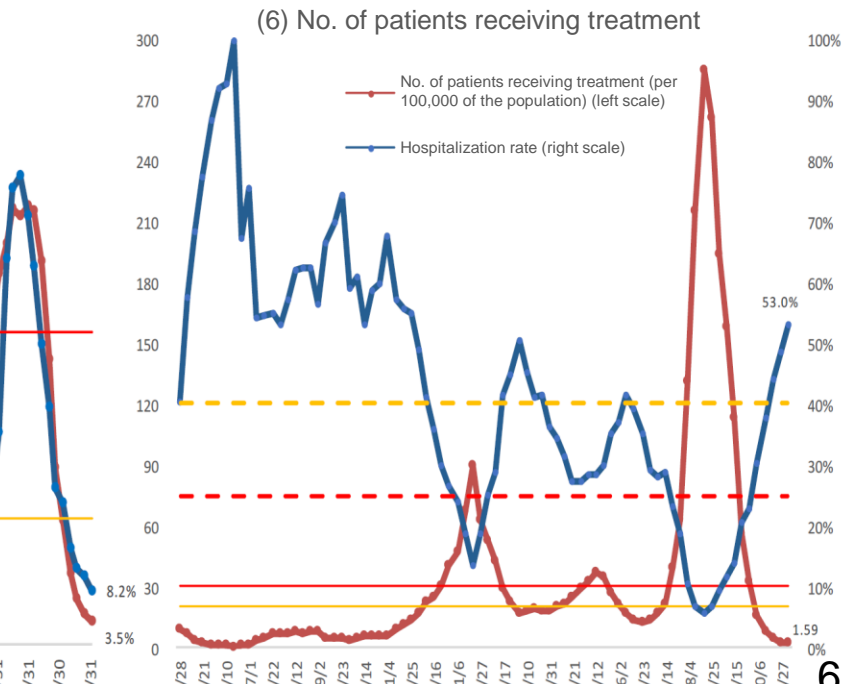
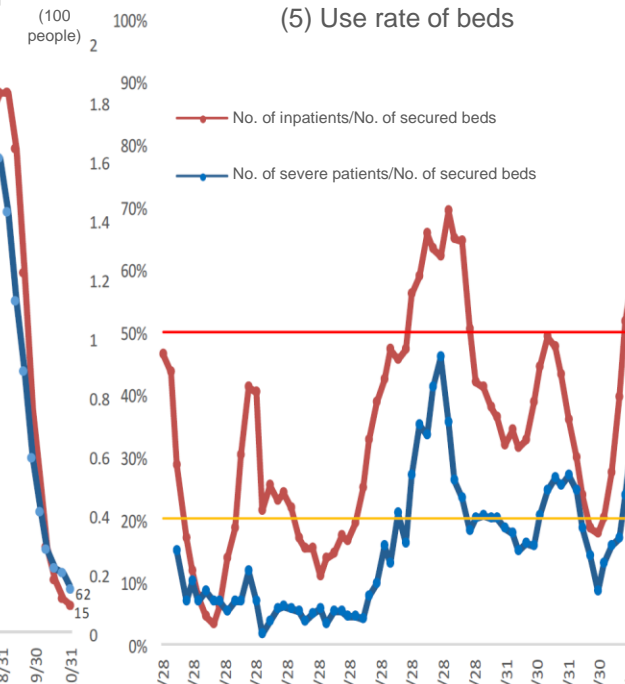
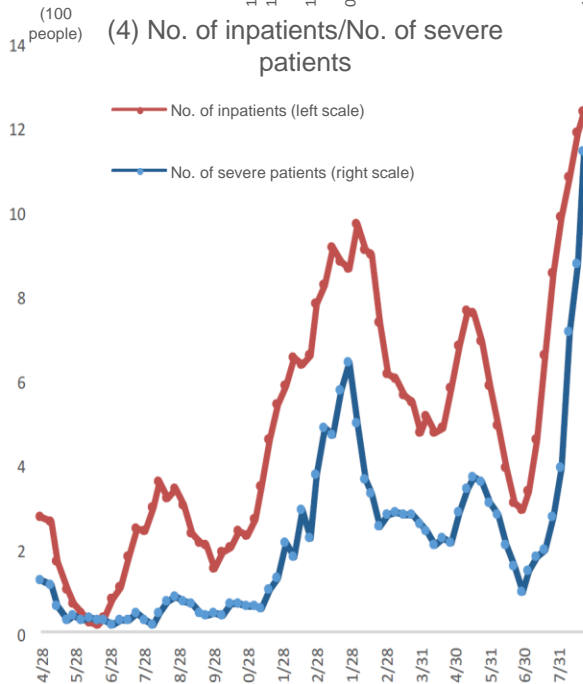
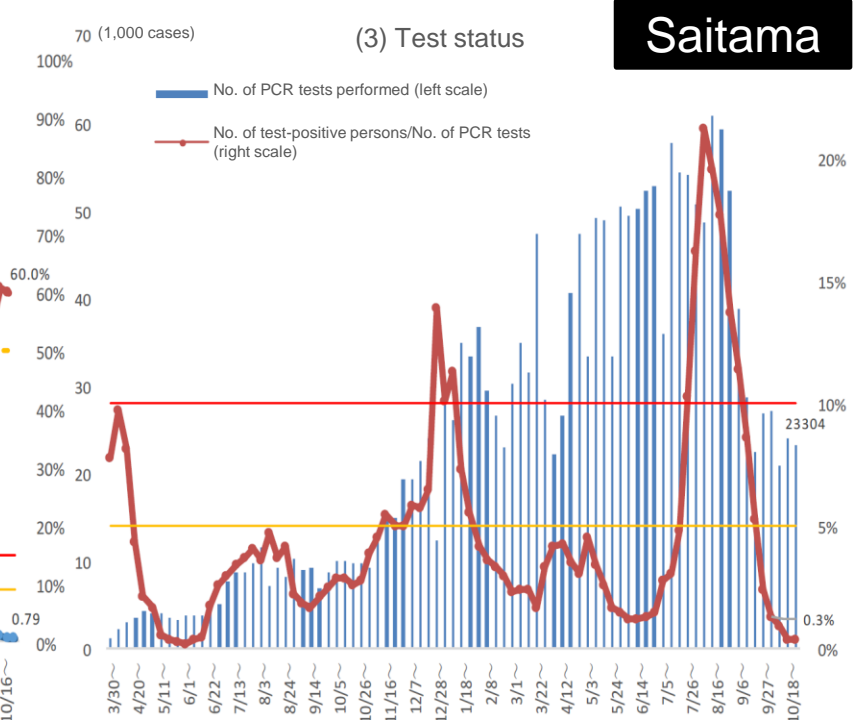
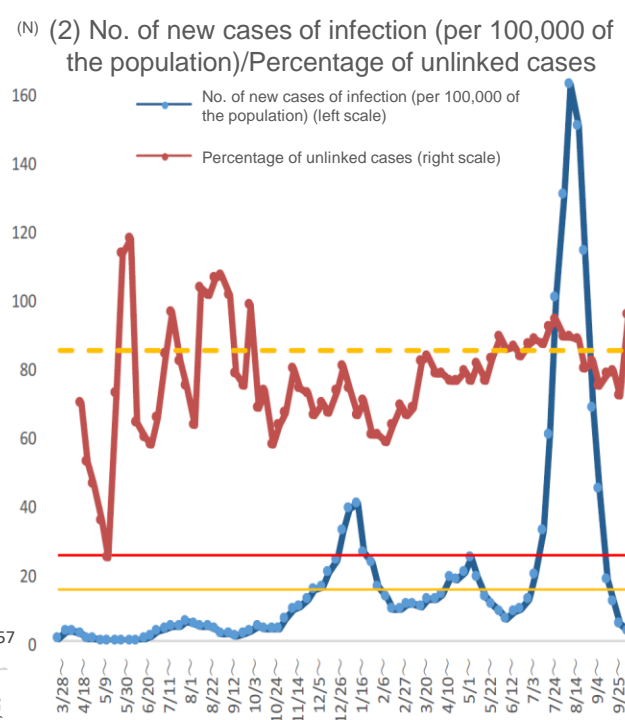
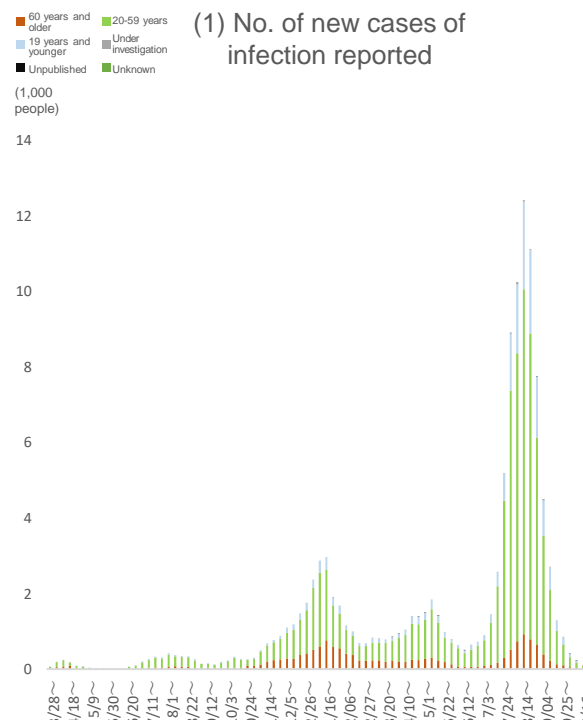
(6) No. of patients receiving treatment

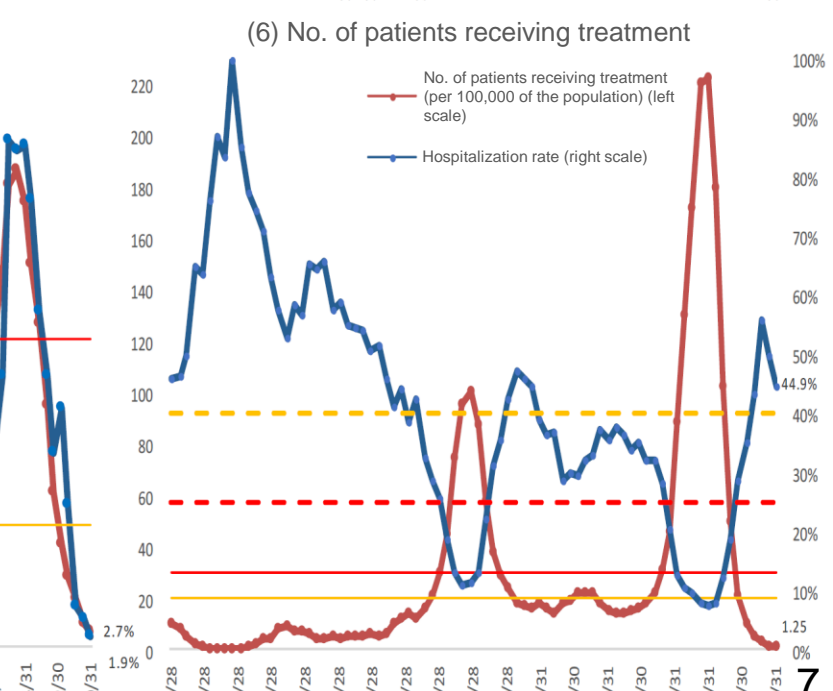
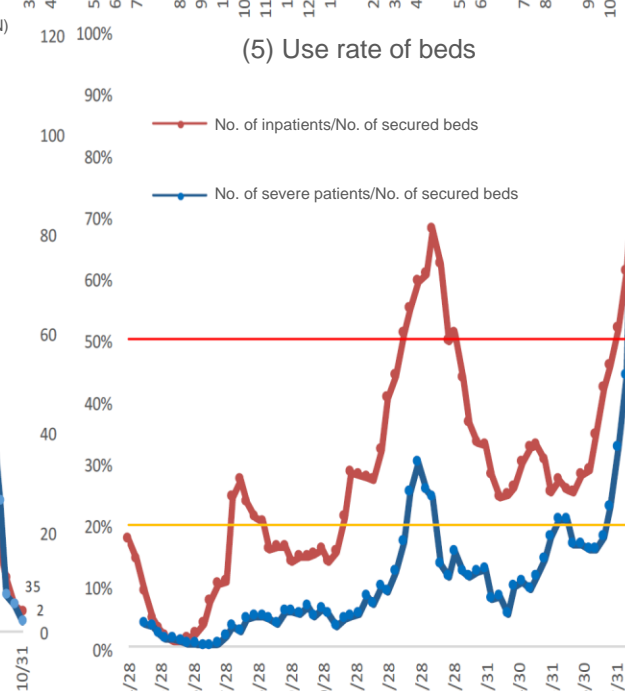
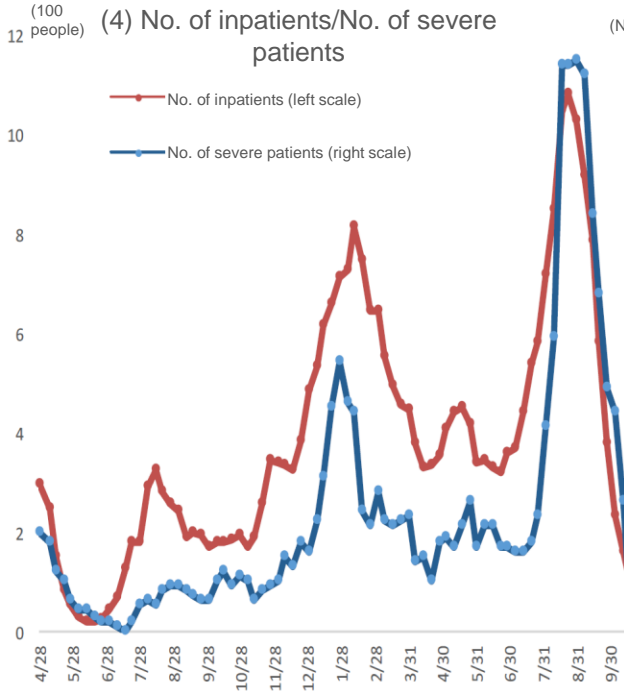
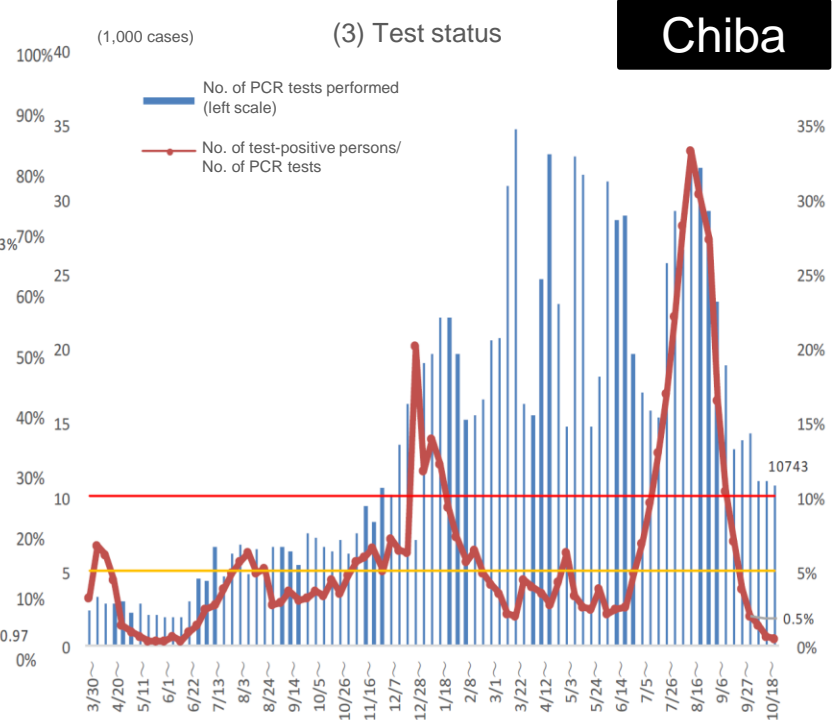
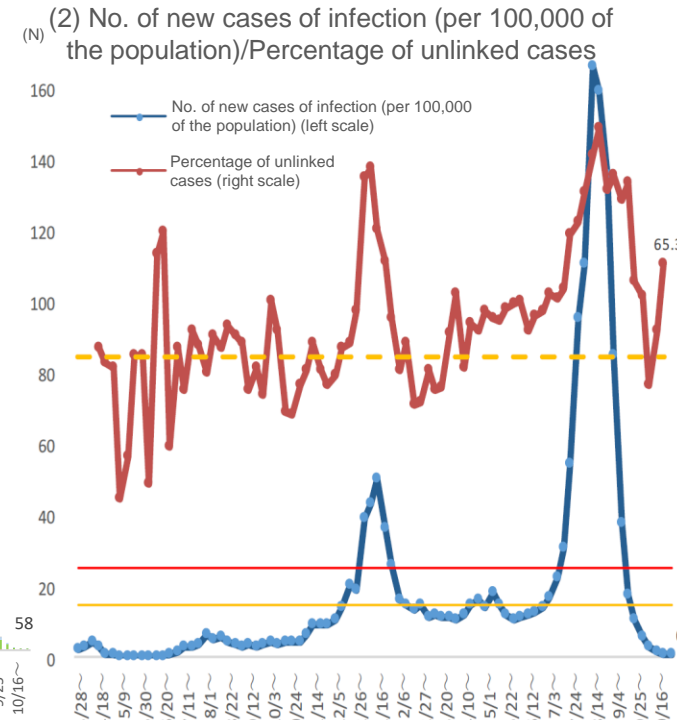
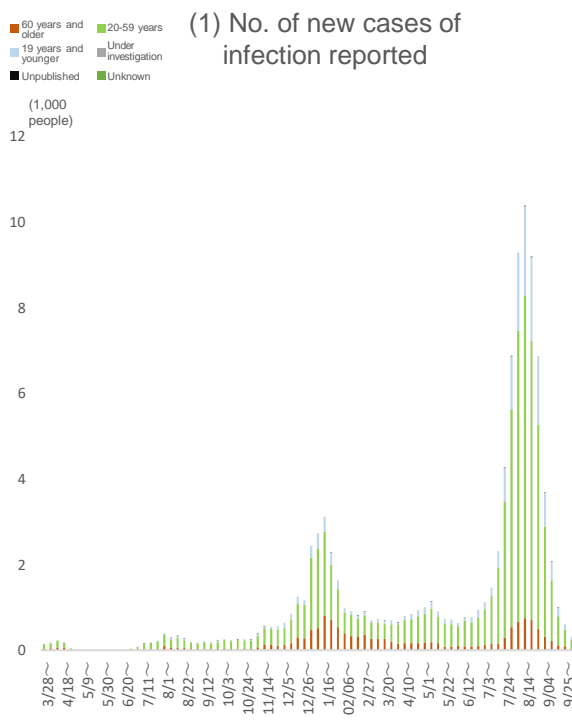


(Source) ADB Material, dated November 9, 2021

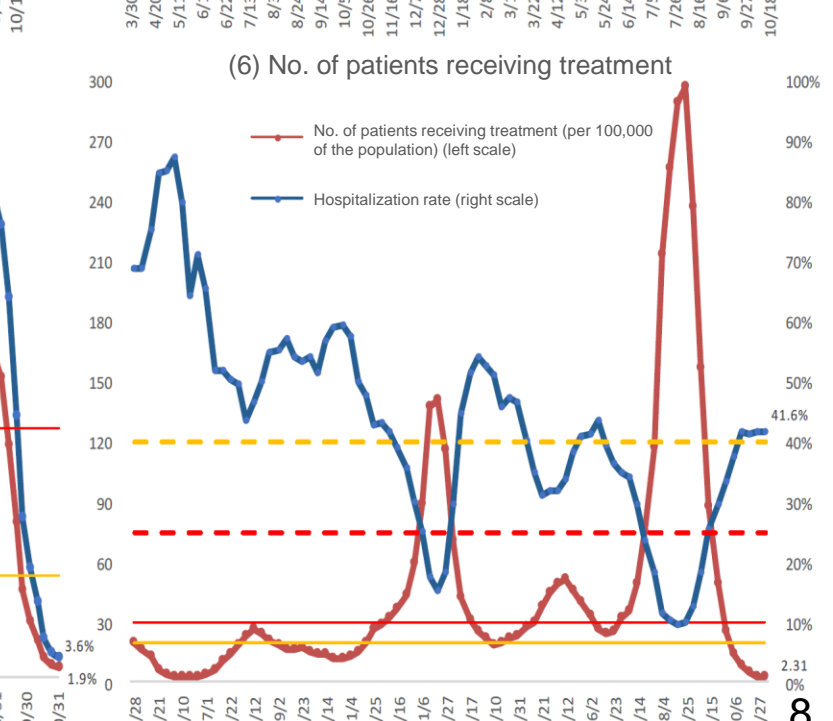
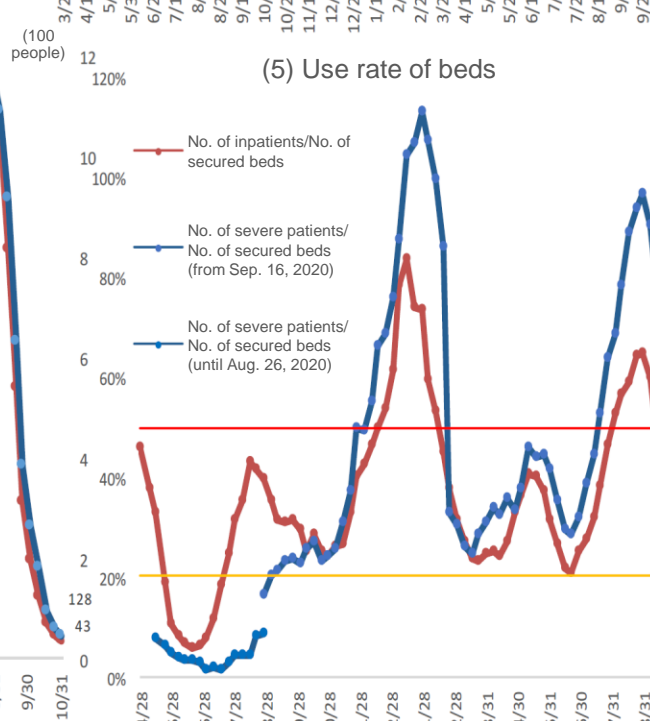
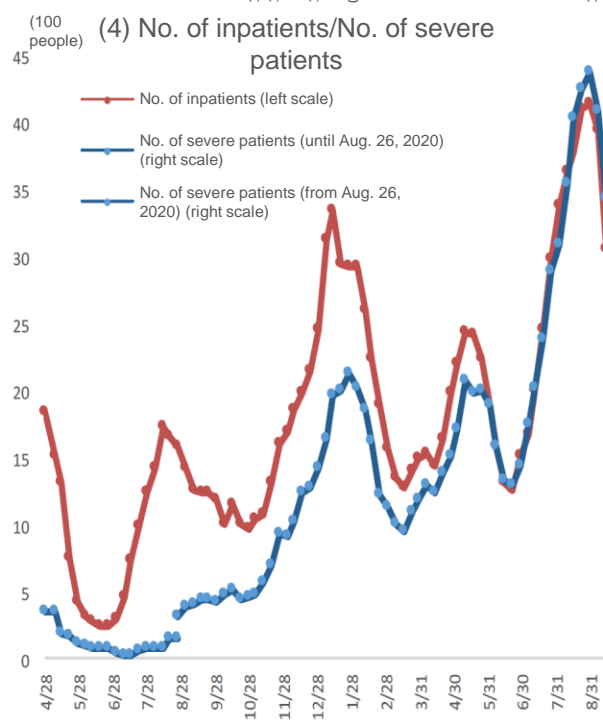
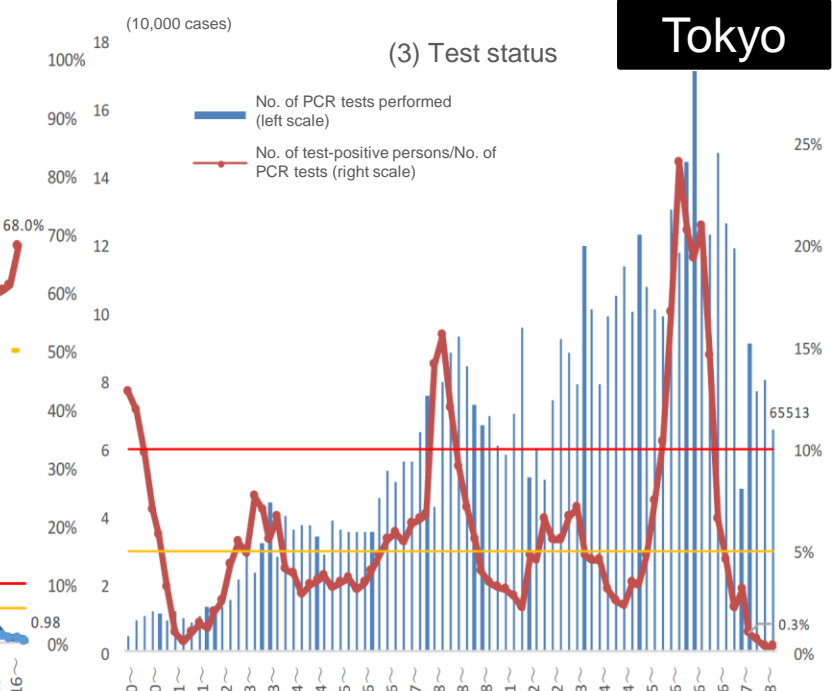
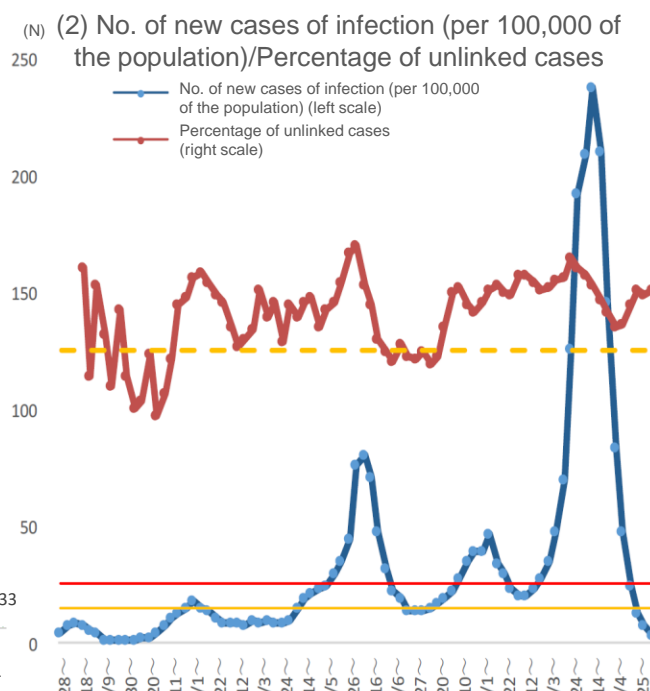
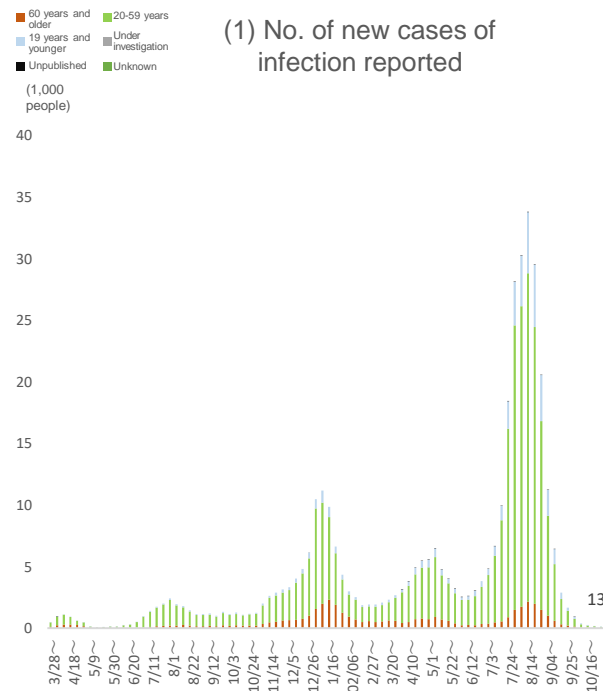


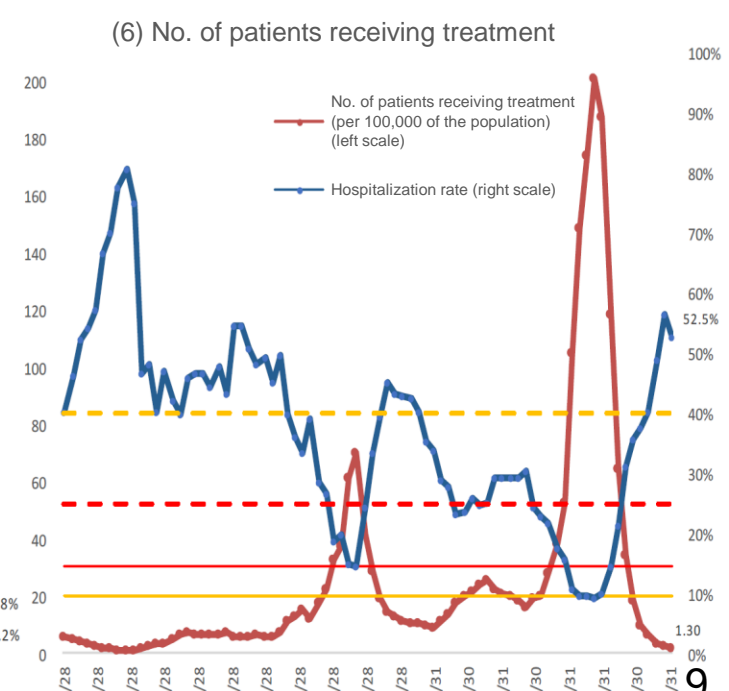
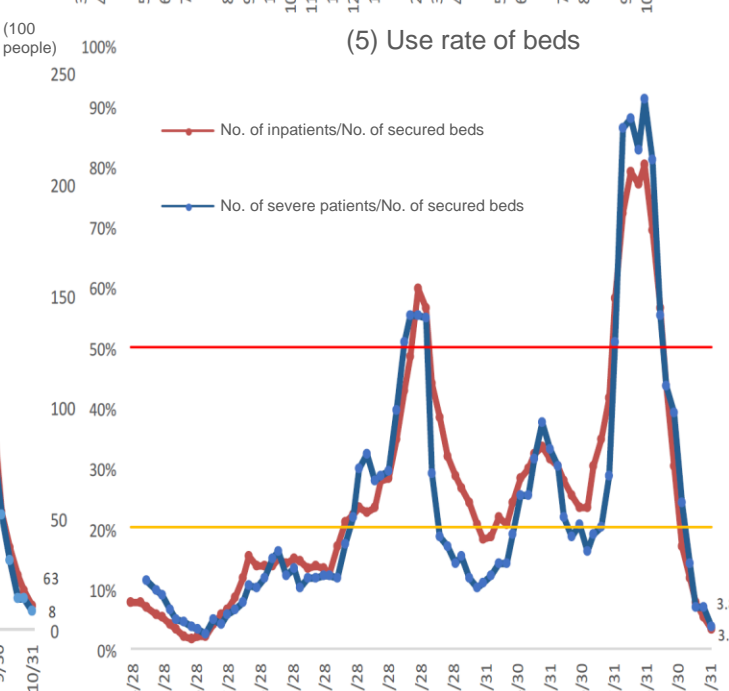
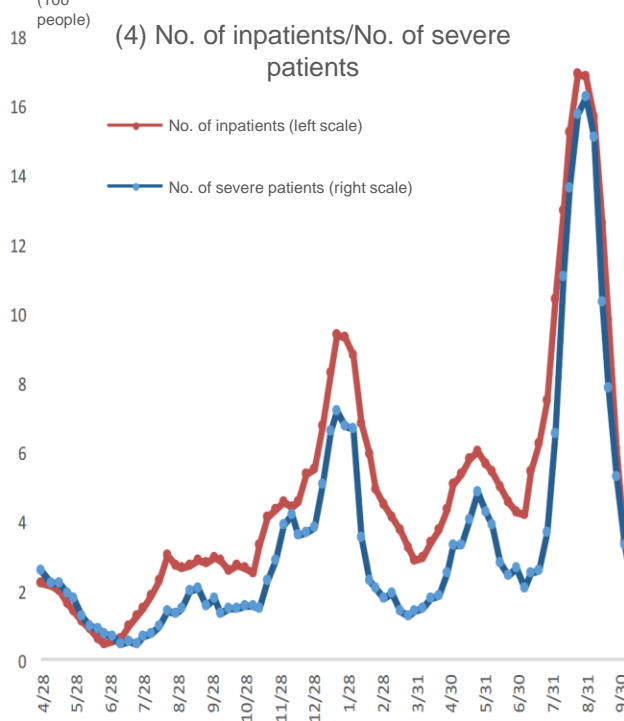
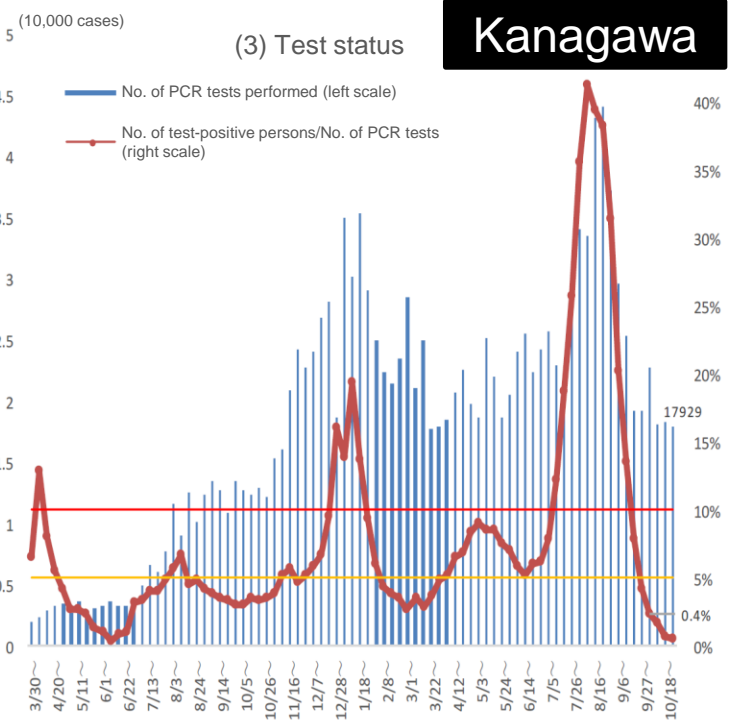
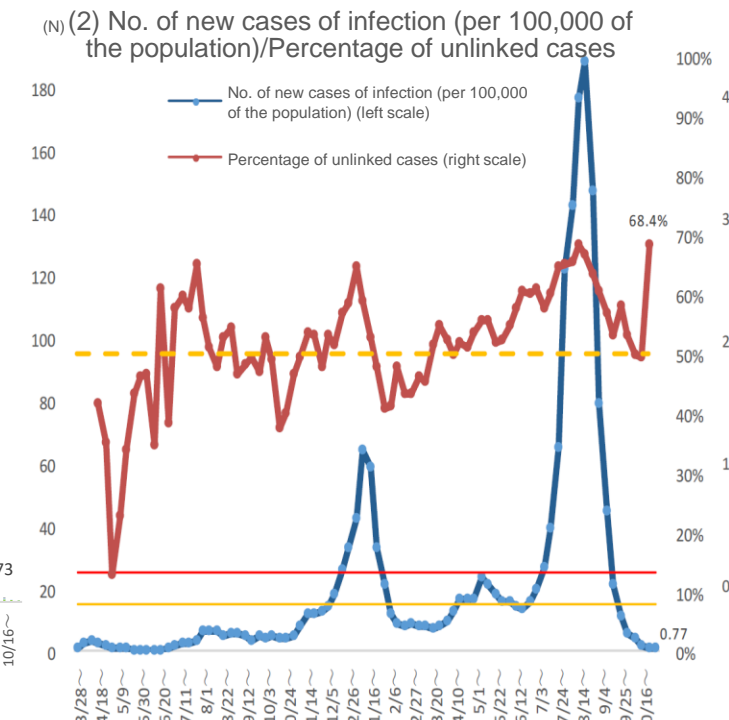
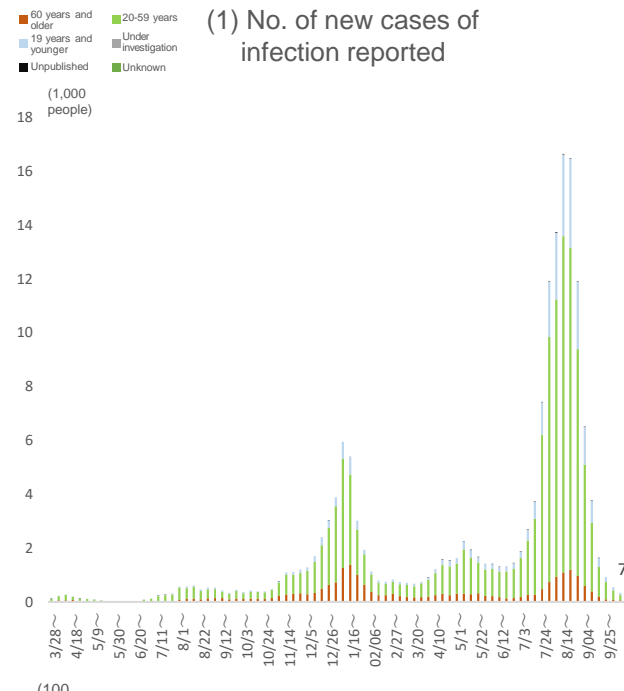
(Source) ADB Material, dated November 9, 2021



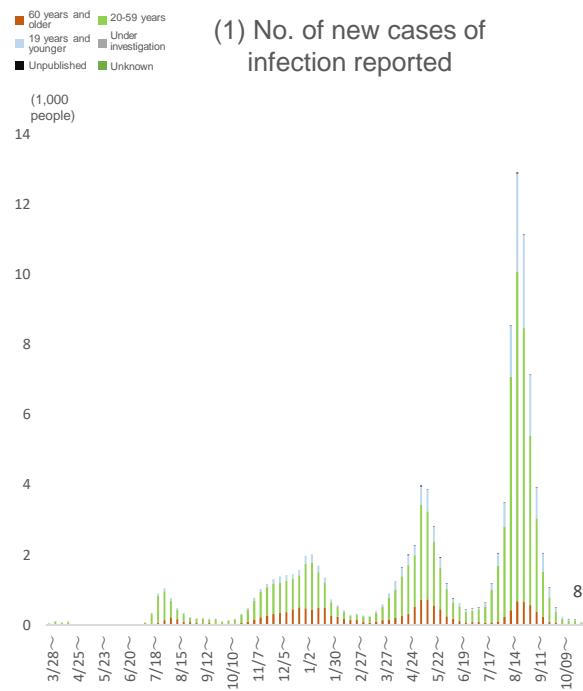


(Source) ADB Material, dated November 9, 2021

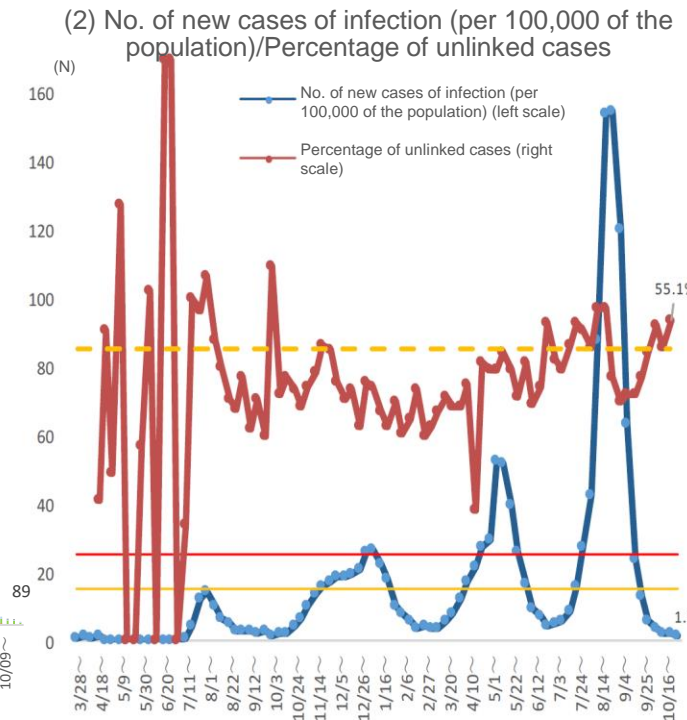




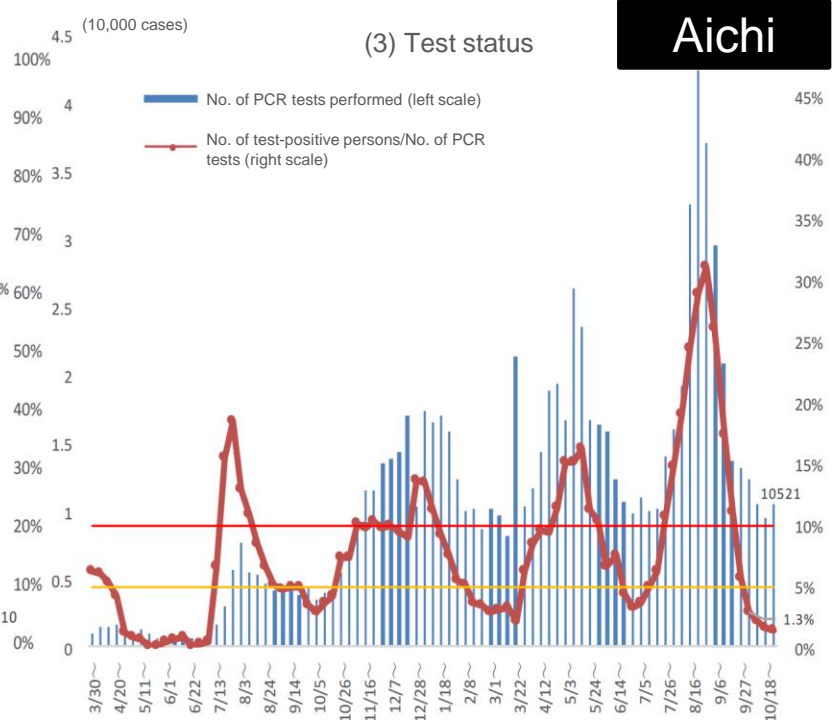
(1) No. of new cases of infection reported



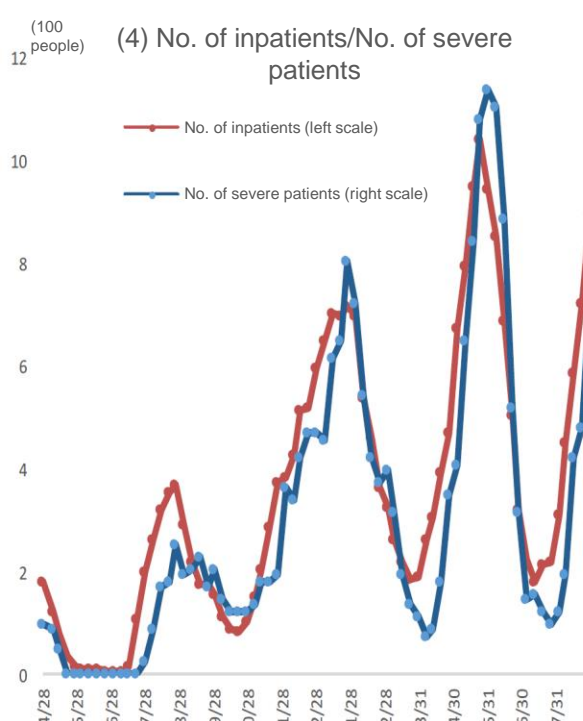
(2) No. of new cases of infection (per 100,000 of the population)/Percentage of unlinked cases



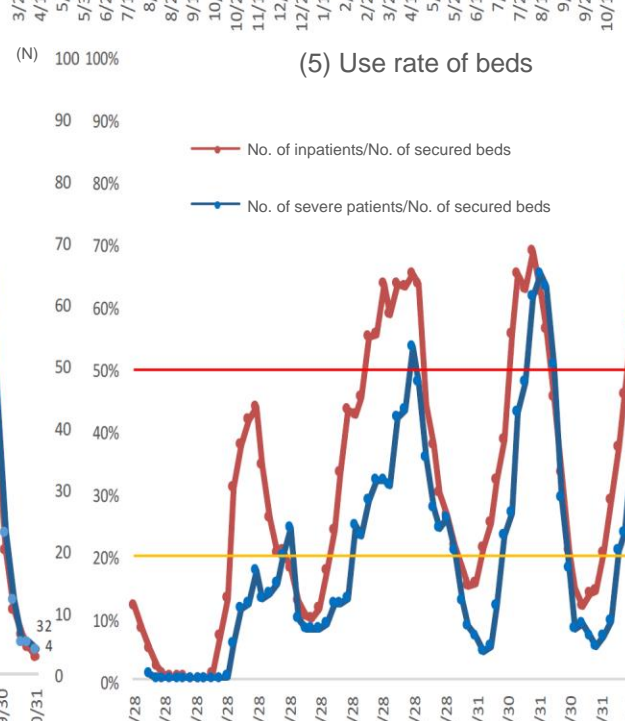
(3) Test status



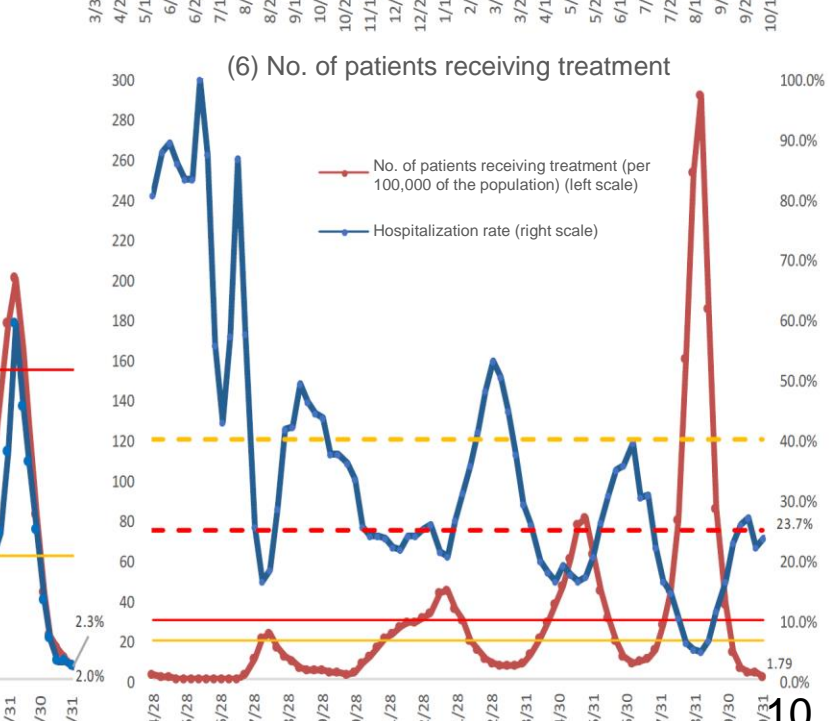
(4) No. of inpatients/No. of severe patients

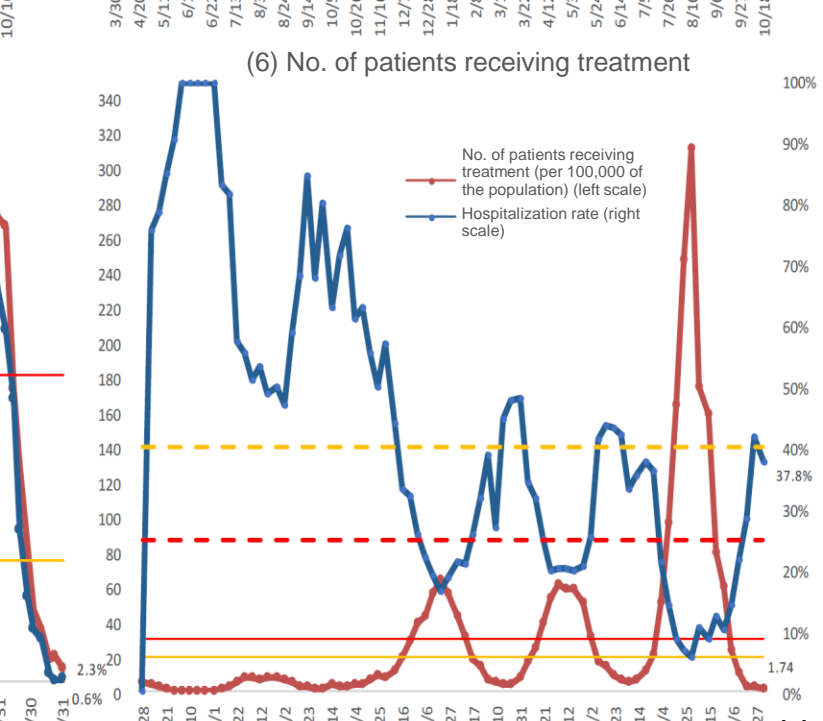
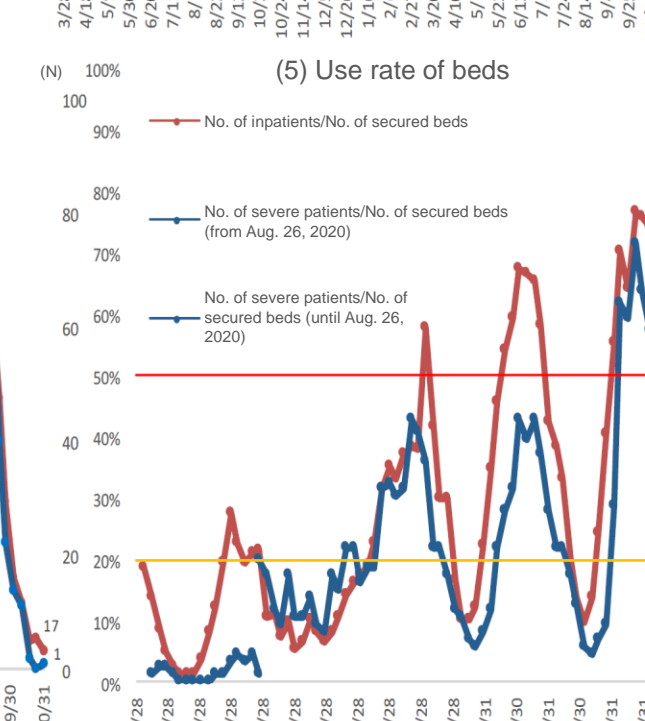
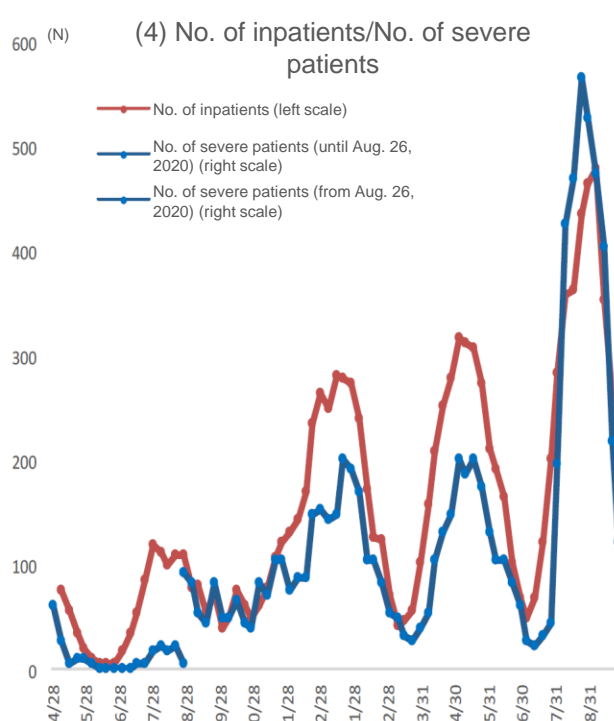
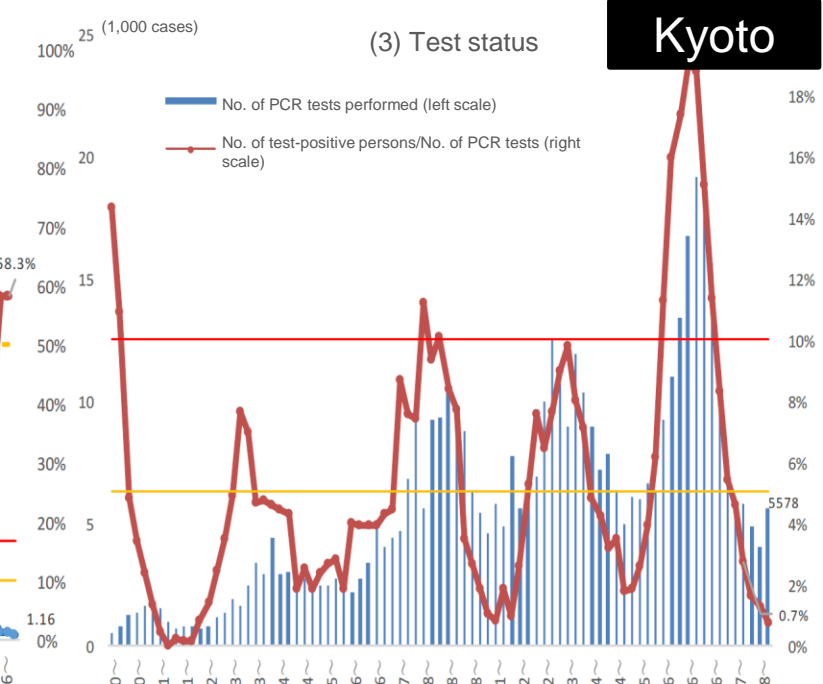
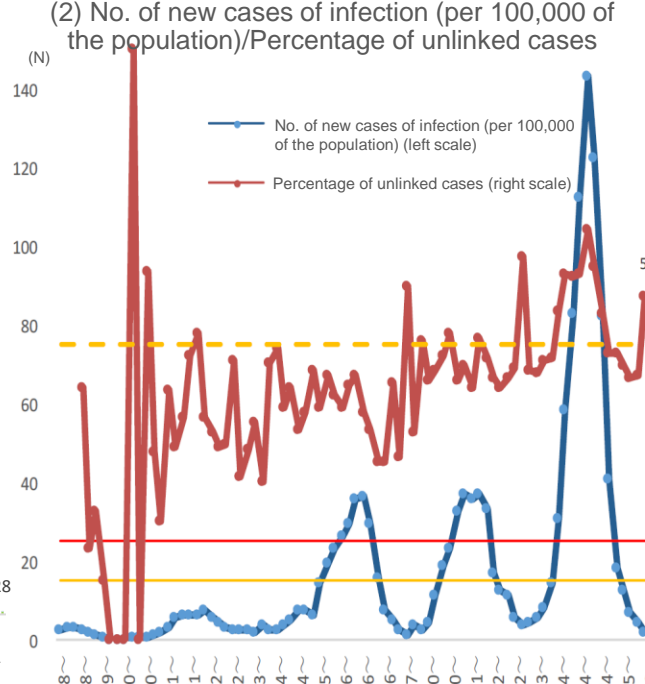
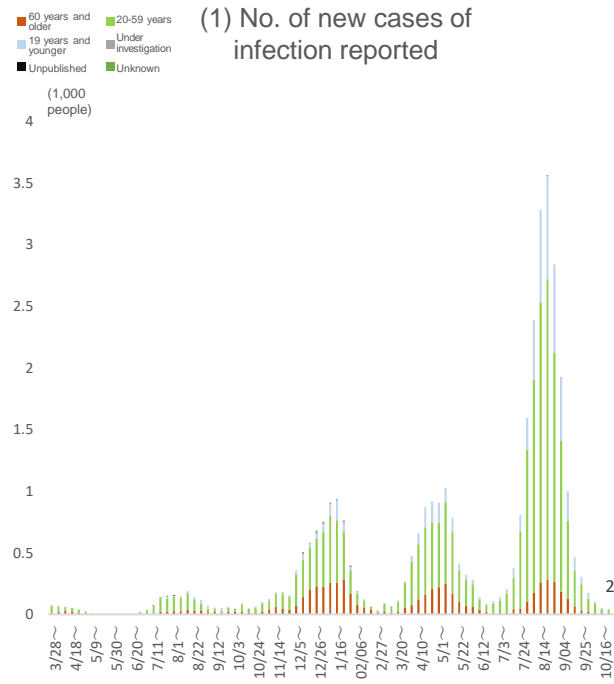


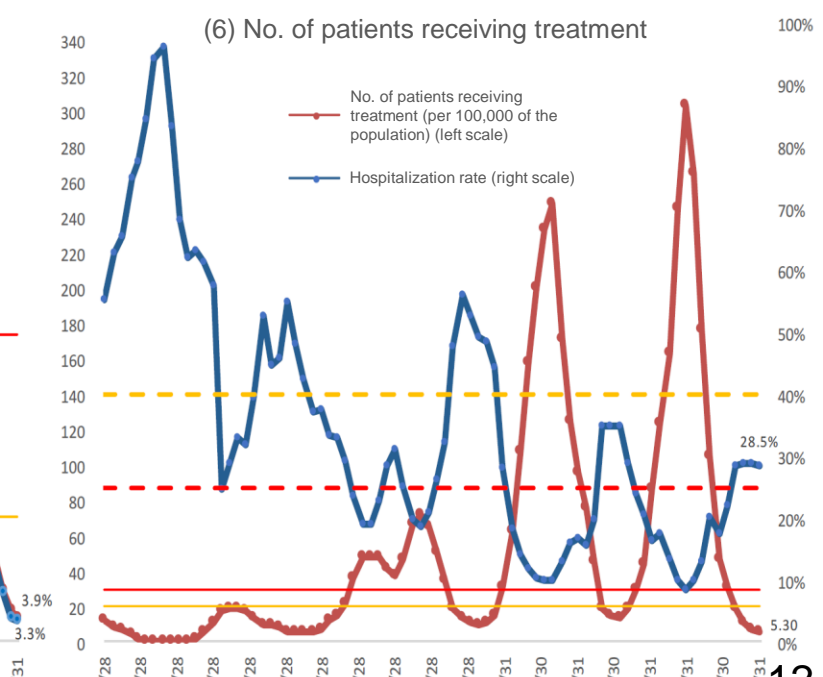
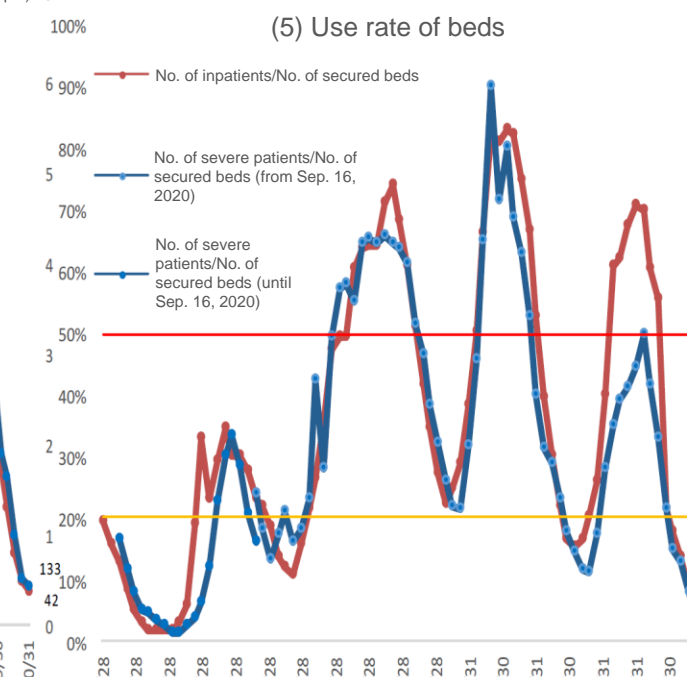
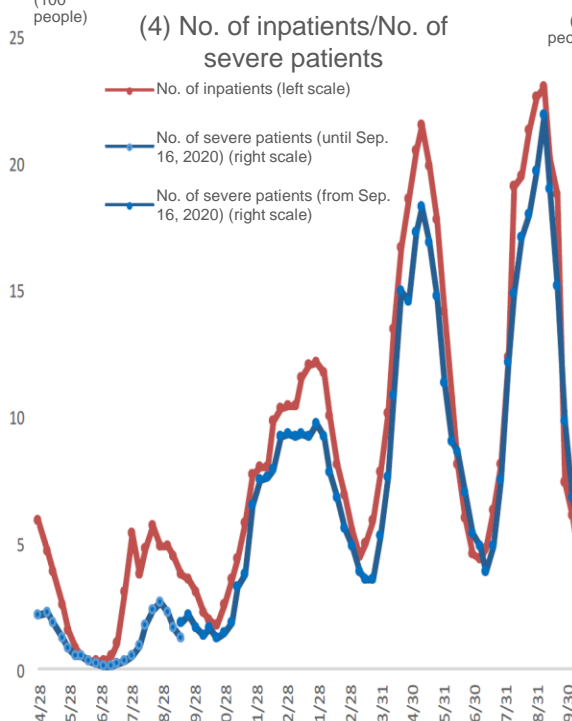
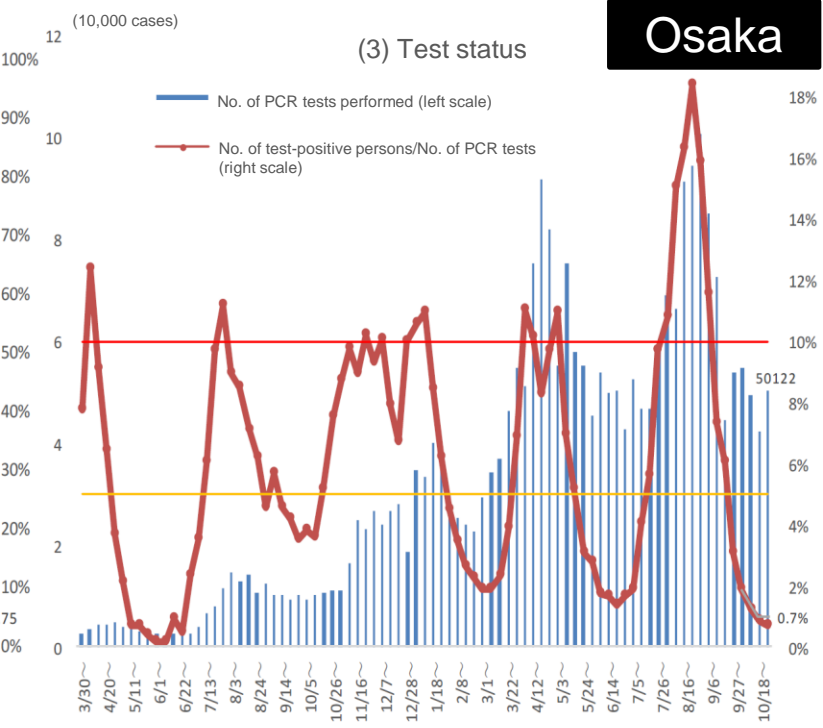
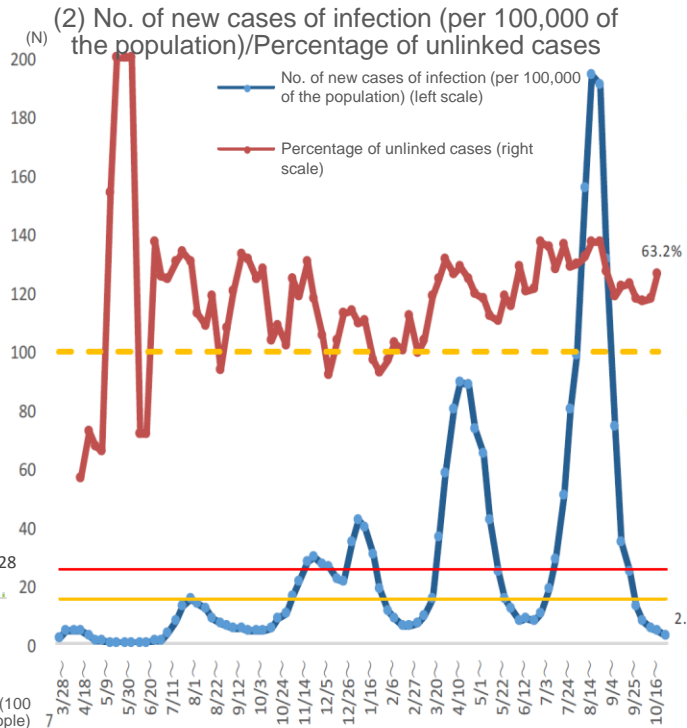
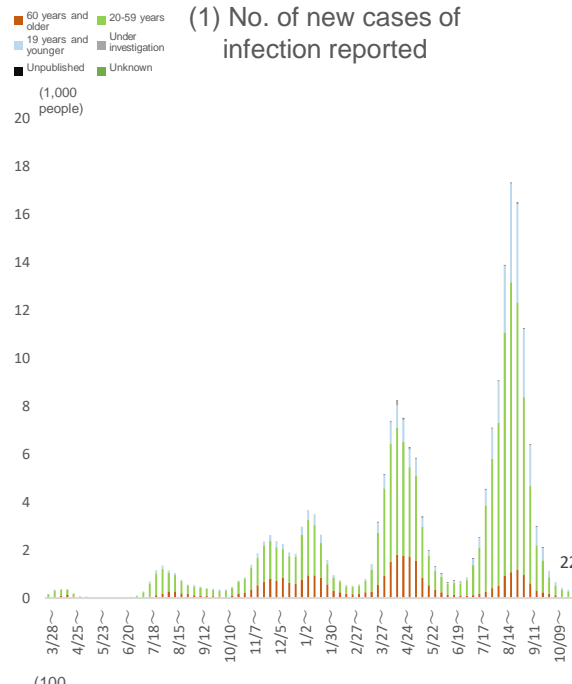
(5) Use rate of beds



(6) No. of patients receiving treatment

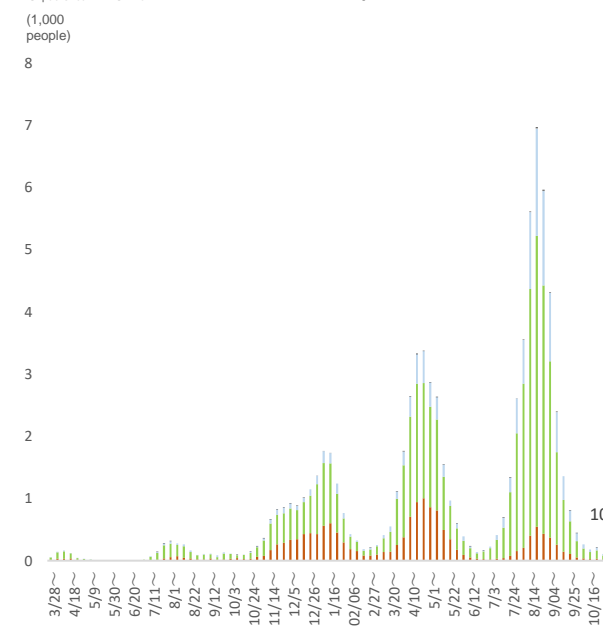




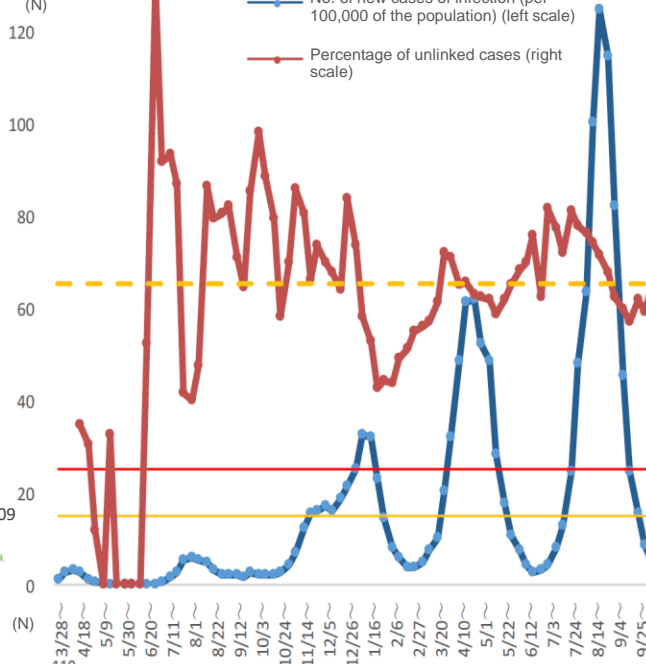


■ 60 years and older
■ 19 years and younger
■ Unpublished
■ 20-59 years
■ Under investigation
■ Unknown

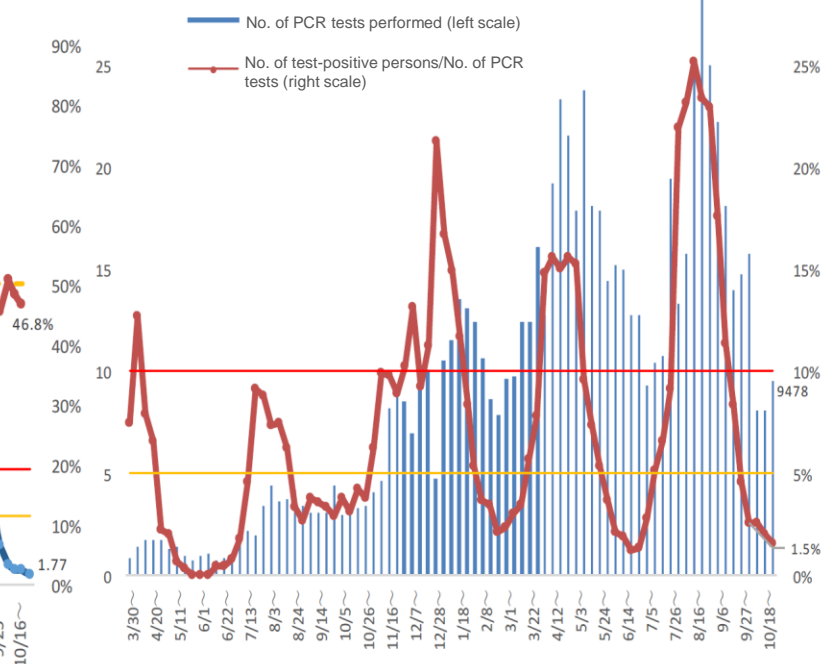
(1) No. of new cases of infection reported



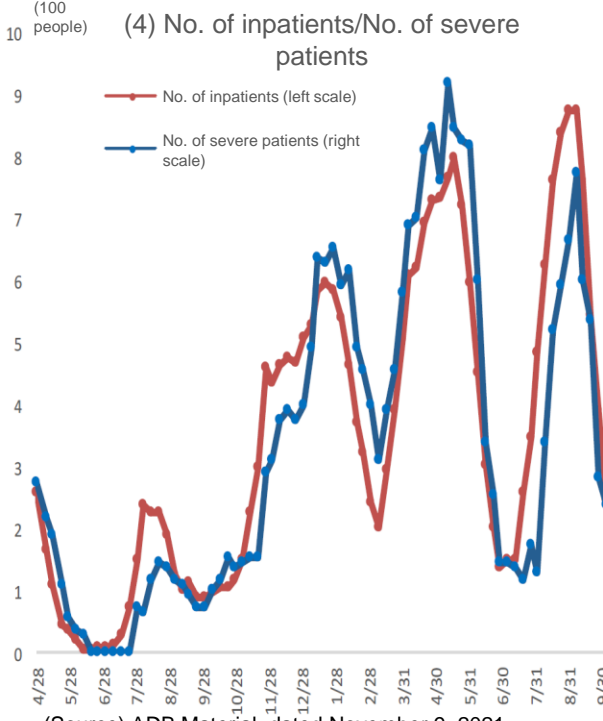
(2) No. of new cases of infection (per 100,000 of the population)/Percentage of unlinked cases



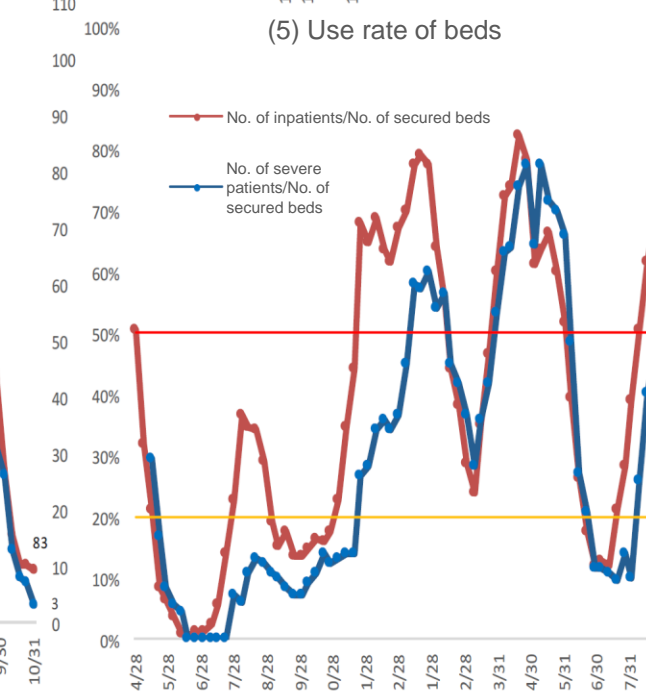
(3) Test status



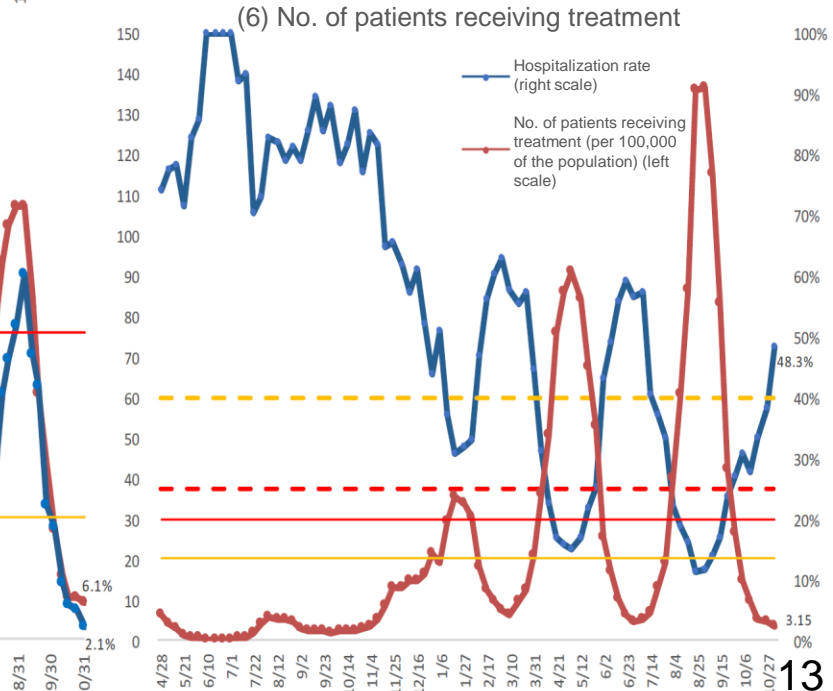
(4) No. of inpatients/No. of severe patients

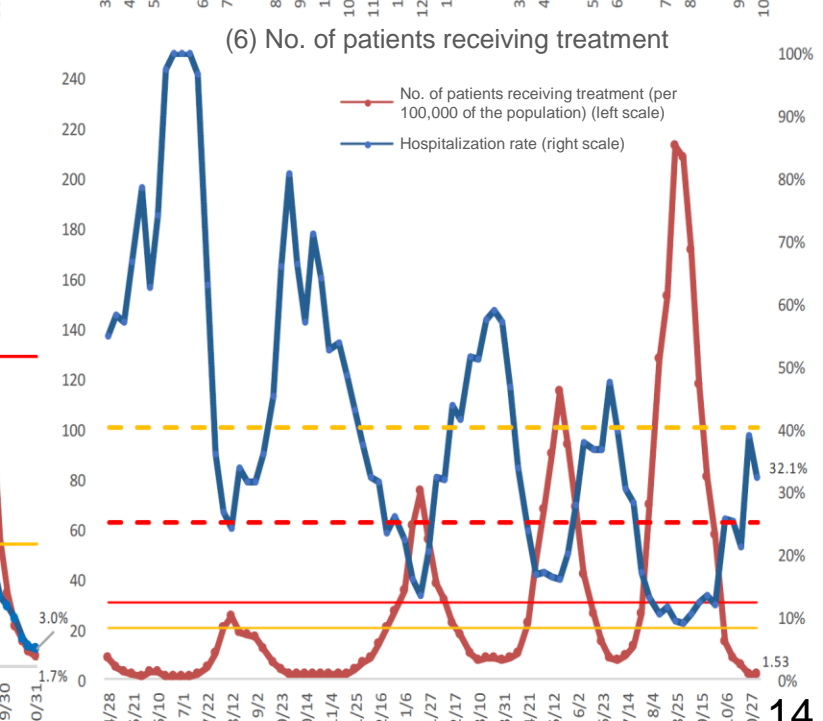
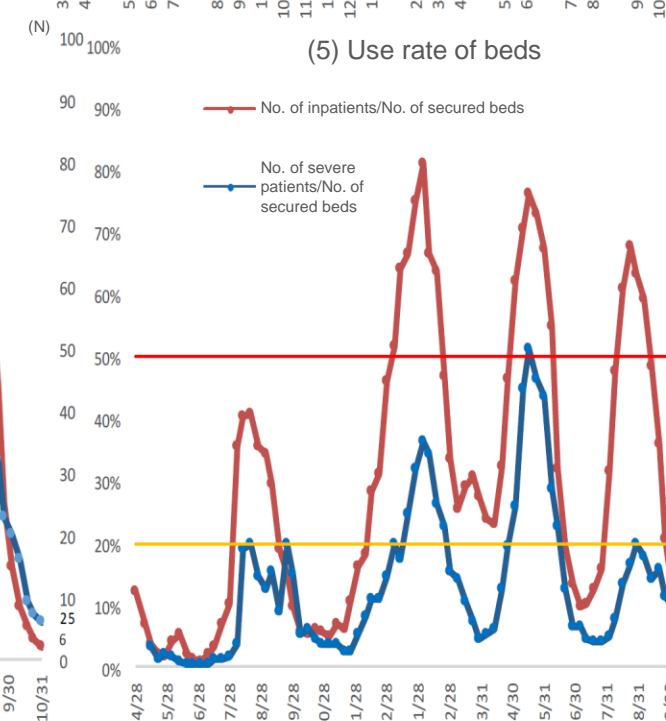
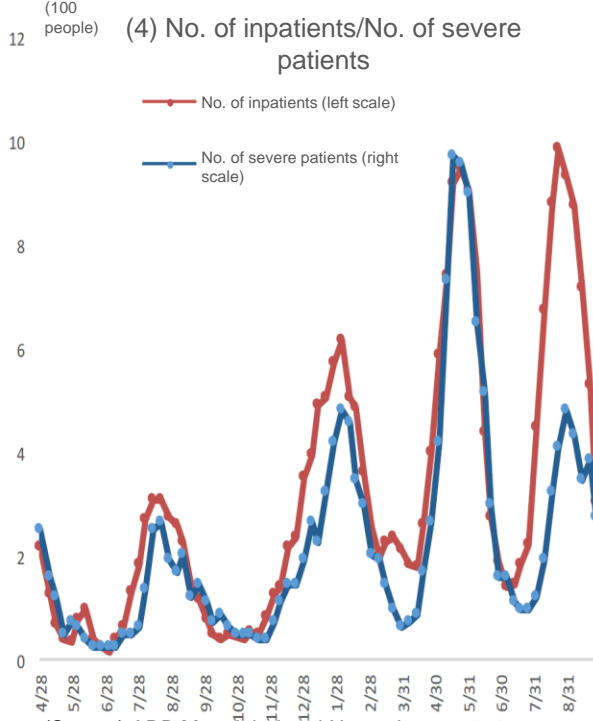
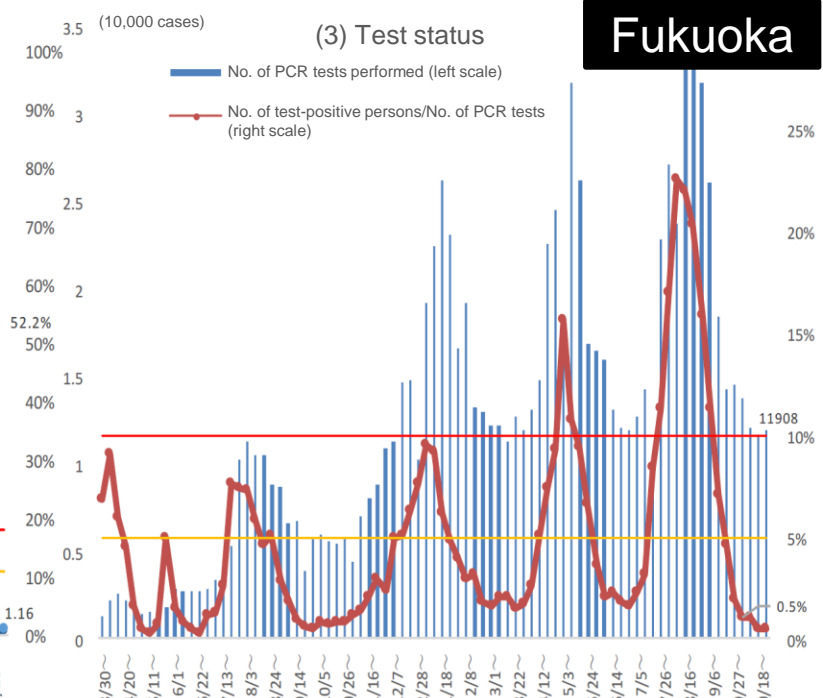
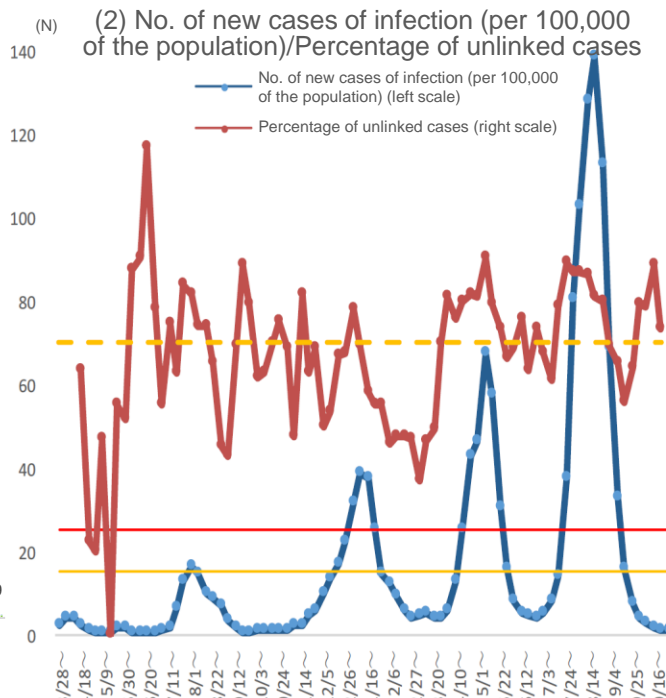
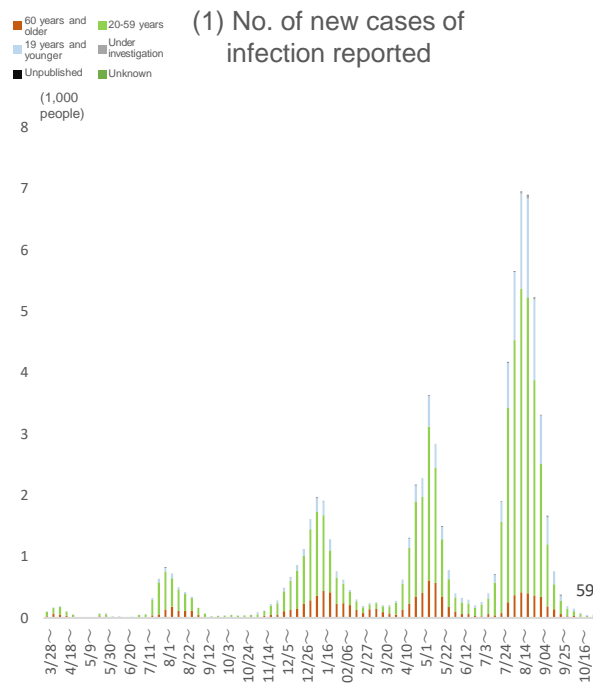


(5) Use rate of beds



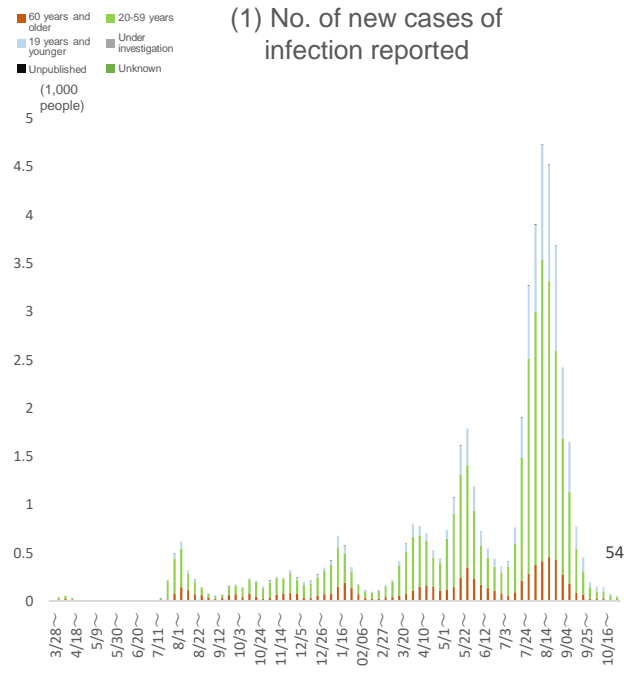
(6) No. of patients receiving treatment



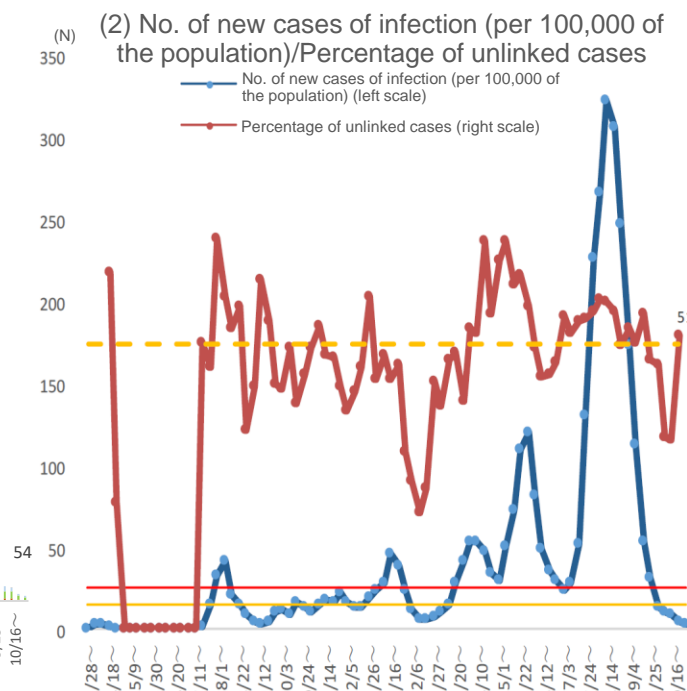


(Source) ADB Material, dated November 9, 2021

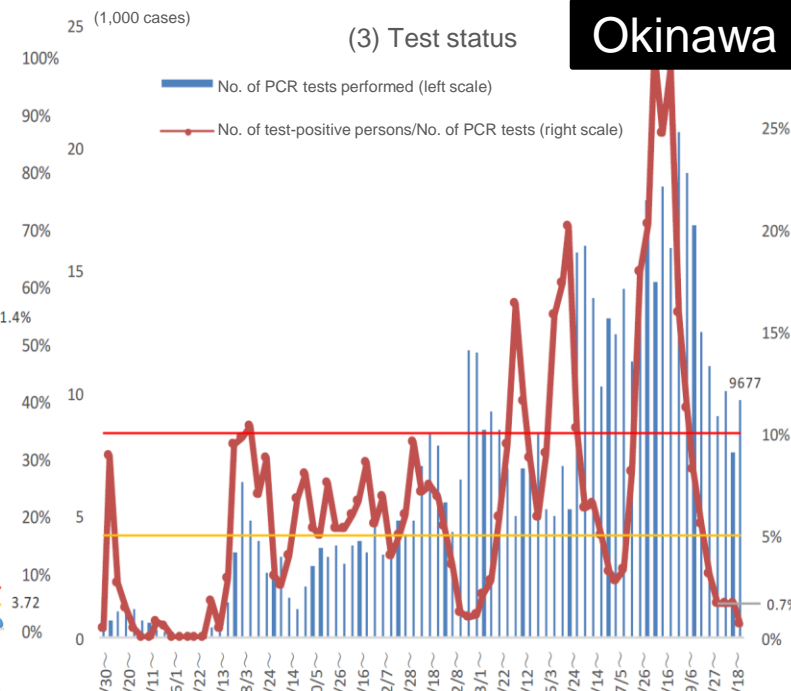
(1) No. of new cases of infection reported



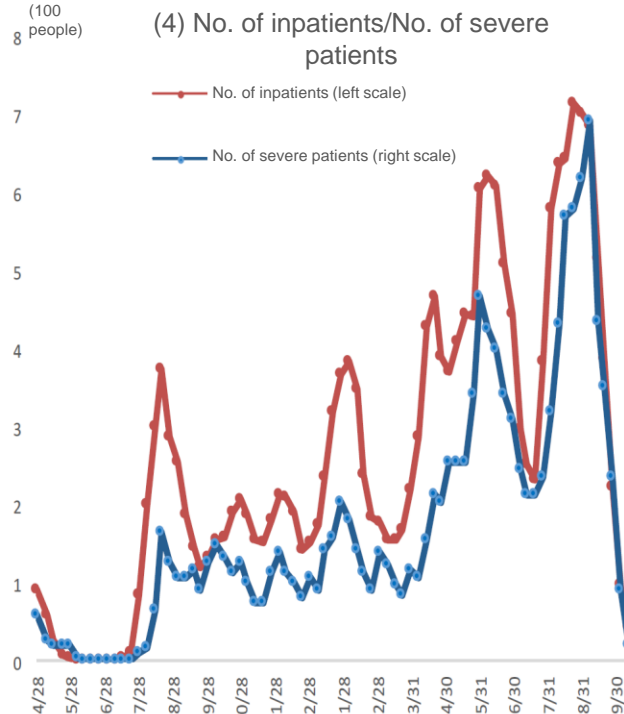
(2) No. of new cases of infection (per 100,000 of the population)/Percentage of unlinked cases



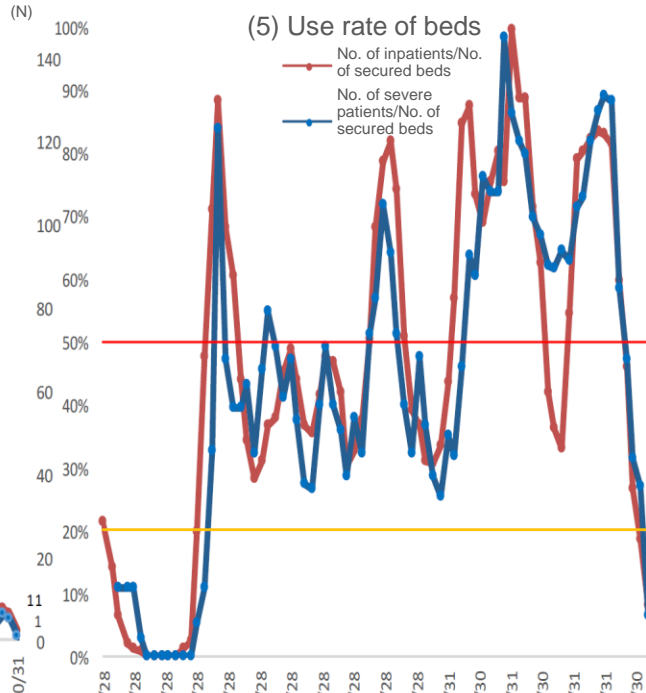
(3) Test status



(4) No. of inpatients/No. of severe patients



(5) Use rate of beds



(6) No. of patients receiving treatment

