

Latest infection status, etc. (1)

○ Trends in the numbers of new cases of infection (Per 100,000 people)

○ Trends in the testing system (No. of tests, Positive rate)

	4/6~4/12			4/13~4/19			4/20~4/26			3/29~4/4		4/5~4/11		4/12~4/18	
	Rate	Count	Trend	Rate	Count	Trend	Rate	Count	Trend	Count	Rate	Count	Rate	Count	Rate
Nationwide	17.25	(21,770)	↑	22.67	(28,608)	↑	26.72	(33,712)	↑	361,390↓	4.0%↑	355,880↓	6.0%↑	449,683↑	6.2%↑
Hokkaido	10.29	(540)	↑	11.83	(621)	↑	18.10	(950)	↑	13,015↓	2.8%↑	15,633↑	3.5%↑	17,642↑	3.4%↓
Saitama	12.73	(936)	↑	15.55	(1,143)	↑	19.36	(1,423)	↑	28,424↓	2.8%↑	22,144↓	4.2%↑	26,524↑	4.2%→
Chiba	10.05	(629)	↓	13.82	(865)	↑	14.08	(881)	↑	16,328↓	3.6%↑	15,470↓	4.0%↑	24,597↑	3.5%↓
Tokyo	23.94	(3,333)	↑	30.20	(4,204)	↑	36.71	(5,110)	↑	60,277↑	3.9%↓	50,609↓	6.5%↑	74,339↑	5.5%↓
Kanagawa	10.51	(967)	↑	14.99	(1,379)	↑	16.85	(1,550)	↑	17,942↑	3.7%→	18,448↑	5.1%↑	20,708↑	6.4%↑
Aichi	14.09	(1,064)	↑	18.37	(1,387)	↑	23.90	(1,805)	↑	10,430↓	5.1%↑	11,632↑	8.5%↑	14,419↑	9.6%↑
Kyoto	20.67	(534)	↑	27.53	(711)	↑	37.51	(969)	↑	6,504↑	4.3%↑	6,928↑	7.6%↑	9,968↑	6.5%↓
Osaka	67.16	(5,916)	↑	87.93	(7,746)	↑	88.49	(7,795)	↑	54,671↑	5.7%↑	51,155↓	11.1%↑	75,477↑	10.1%↓
Hyogo	36.00	(1,968)	↑	57.46	(3,141)	↑	64.43	(3,522)	↑	16,075↑	6.5%↑	12,792↓	14.8%↑	19,221↑	15.6%↑
Fukuoka	7.09	(362)	↑	16.46	(840)	↑	33.52	(1,711)	↑	11,915↓	1.5%→	13,150↑	2.6%↑	14,793↑	5.1%↑
Okinawa	55.06	(800)	↑	54.37	(790)	↓	44.18	(642)	↓	6,854↓	8.1%↑	4,975↓	16.3%↑	6,878↑	11.6%↓

* ↑, ↓, and → indicate an increase, a decrease, and the same level, respectively, compared to the previous week.

Latest infection status, etc. (2)

○ Trends in the numbers of inpatients

[No. of inpatients (Ratio to the no. of secured beds)]

	4/7	4/14	4/21
Nationwide	8,602 (27.2%) ↑	9,423 (29.8%) ↑	11,279 (35.3%) ↑
Hokkaido	431 (23.6%) ↑	478 (26.2%) ↑	569 (31.2%) ↑
Saitama	517 (34.4%) ↑	476 (31.5%) ↓	485 (32.5%) ↑
Chiba	379 (27.8%) ↓	331 (24.3%) ↓	335 (24.6%) ↑
Tokyo	1,528 (25.3%) ↑	1,450 (24.0%) ↑	1,643 (27.2%) ↑
Kanagawa	290 (18.6%) ↑	339 (21.8%) ↑	371 (20.7%) ↑
Aichi	259 (21.3%) ↑	304 (25.0%) ↑	389 (32.0%) ↑
Kyoto	157 (34.7%) ↑	208 (45.9%) ↑	252 (54.1%) ↑
Osaka	1,013 (50.1%) ↑	1,338 (66.2%) ↑	1,664 (82.3%) ↑
Hyogo	608 (72.5%) ↑	620 (73.9%) ↑	693 (82.6%) ↑
Fukuoka	183 (23.8%) ↓	177 (23.0%) ↓	260 (32.4%) ↑
Okinawa	287 (56.6%) ↑	429 (84.6%) ↑	469 (87.5%) ↑

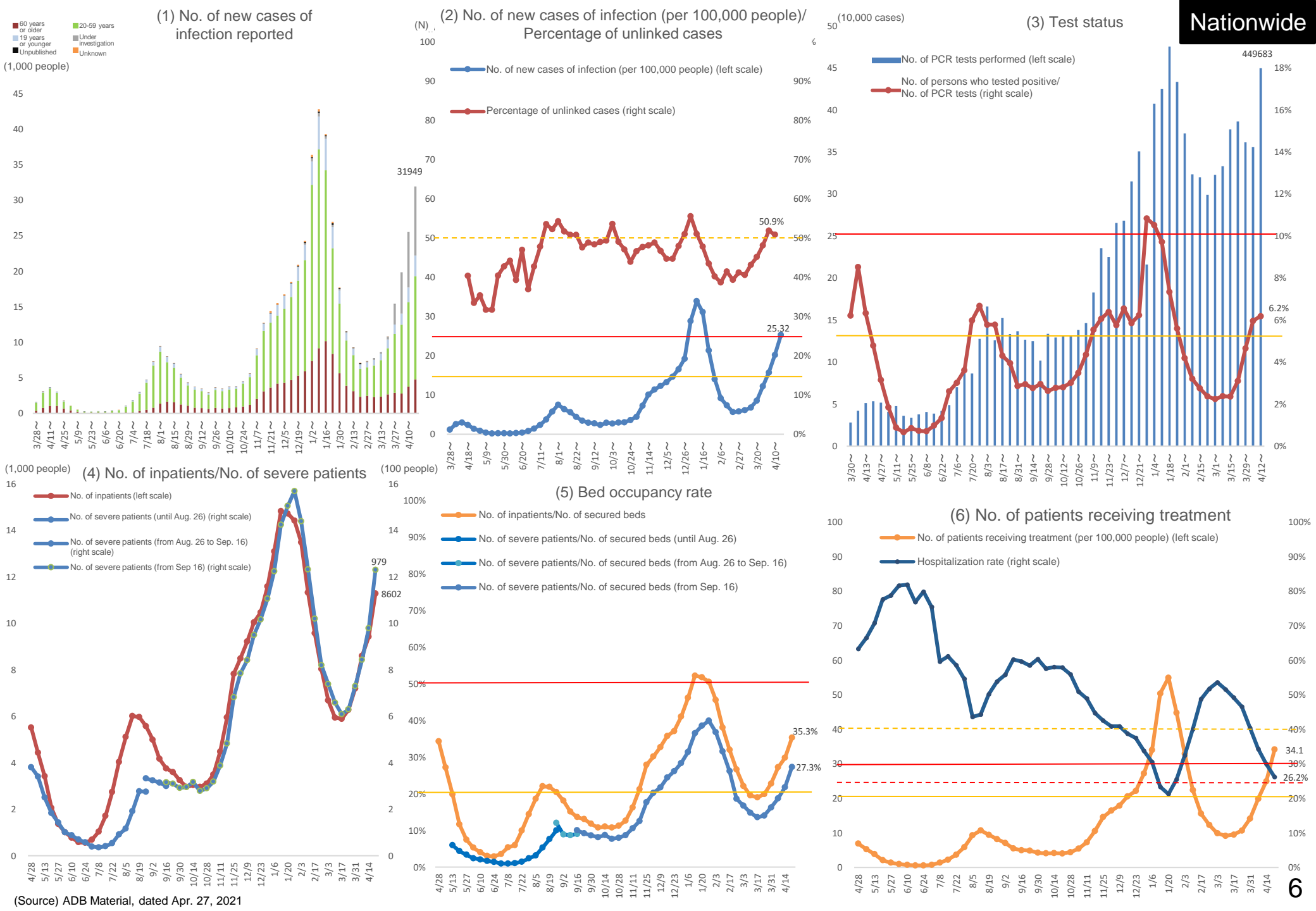
○ Trends in the numbers of severe patients

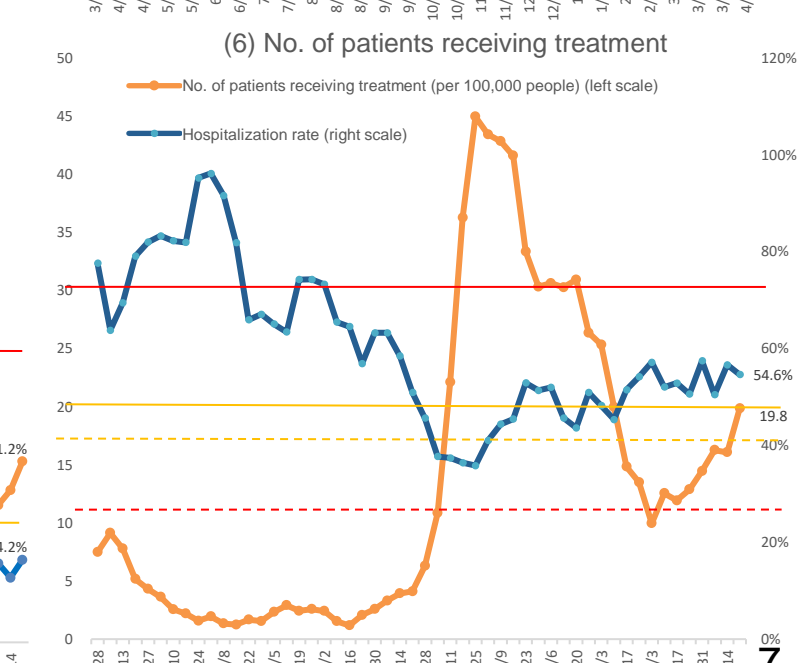
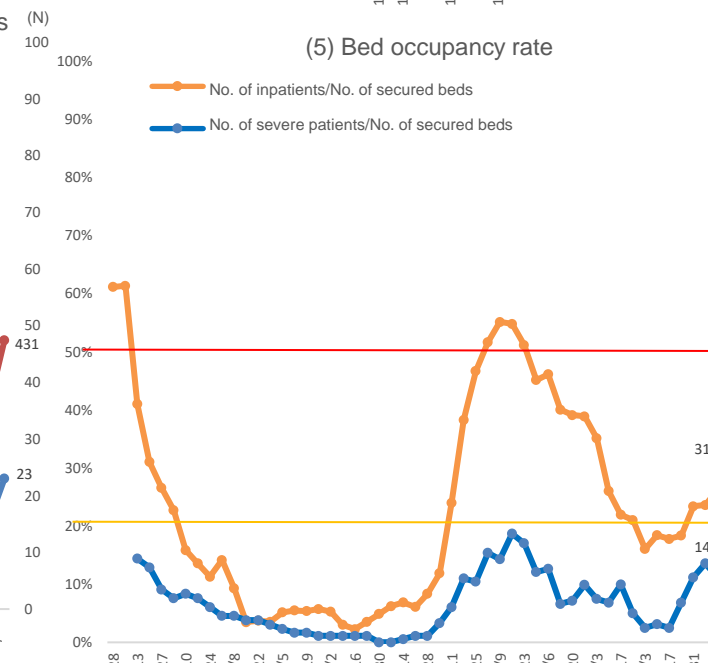
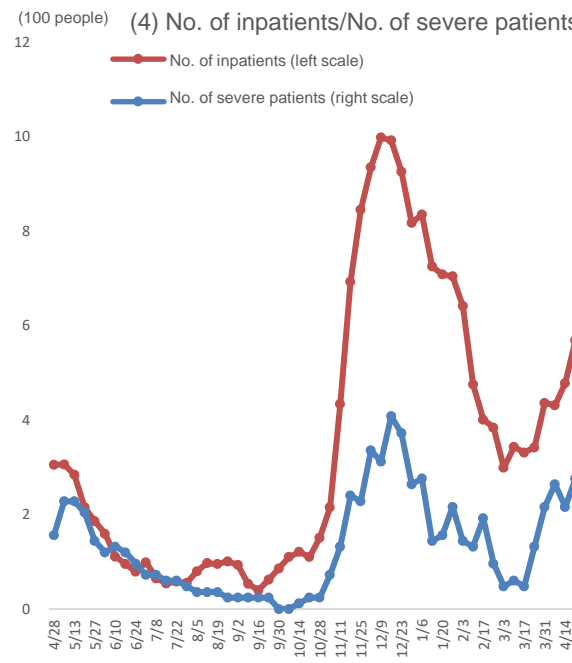
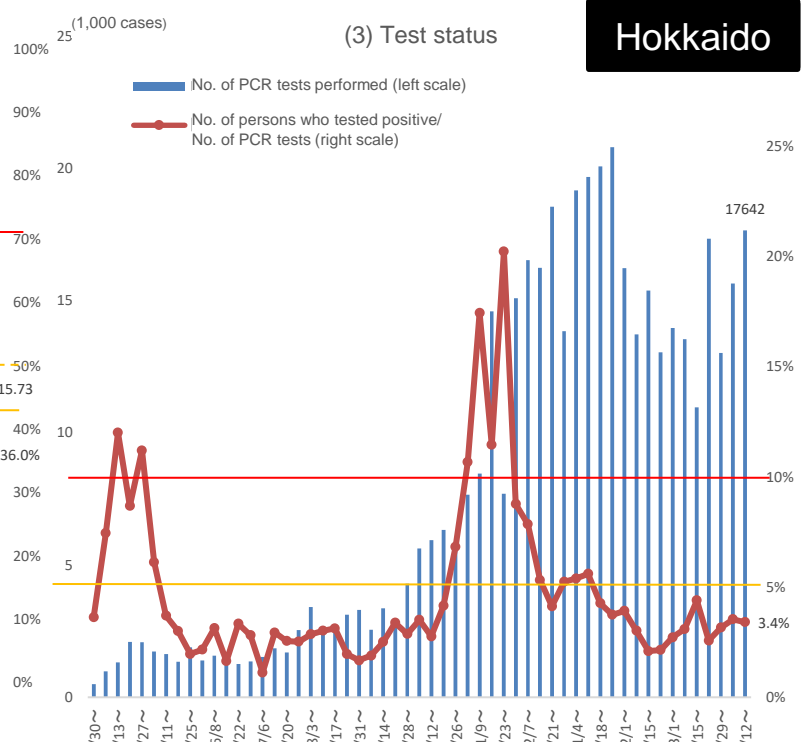
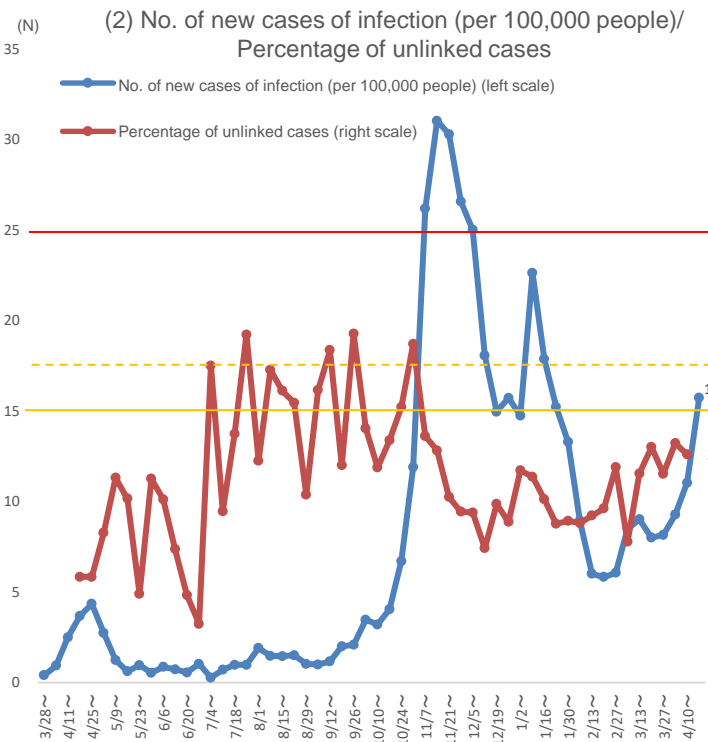
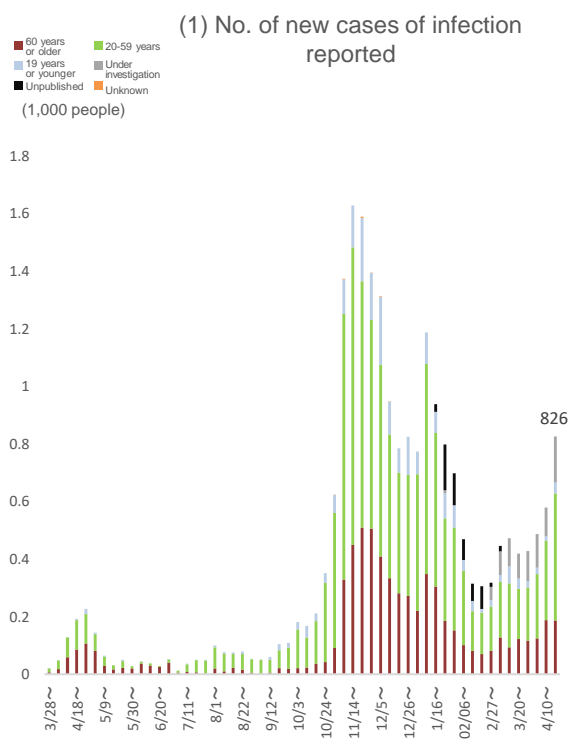
[No. of inpatients (Ratio to the no. of secured beds)]

	4/7	4/14	4/21
Nationwide	843 (18.7%) ↑	979 (21.8%) ↑	1230 (27.3%) ↑
Hokkaido	22 (13.6%) ↑	18 (11.1%) ↓	23 (14.2%) ↑
Saitama	35 (17.5%) ↓	30 (15.0%) ↓	32 (16.0%) ↑
Chiba	14 (7.8%) ↓	15 (8.3%) ↑	10 (5.6%) ↓
Tokyo	345 (33.7%) ↑	333 (32.5%) ↓	368 (35.9%) ↑
Kanagawa	23 (12.1%) ↑	27 (14.2%) ↑	28 (14.1%) ↑
Aichi	6 (4.8%) ↓	7 (5.6%) ↑	15 (11.9%) ↑
Kyoto	10 (11.6%) ↑	19 (22.1%) ↑	24 (27.9%) ↑
Osaka	212 (45.7%) ↑	302 (65.1%) ↑	418 (90.1%) ↑
Hyogo	76 (63.3%) ↑	77 (64.2%) ↑	89 (74.2%) ↑
Fukuoka	6 (5.4%) ↑	7 (6.3%) ↑	14 (12.6%) ↑
Okinawa	20 (31.7%) ↓	29 (46.0%) ↑	40 (63.5%) ↑

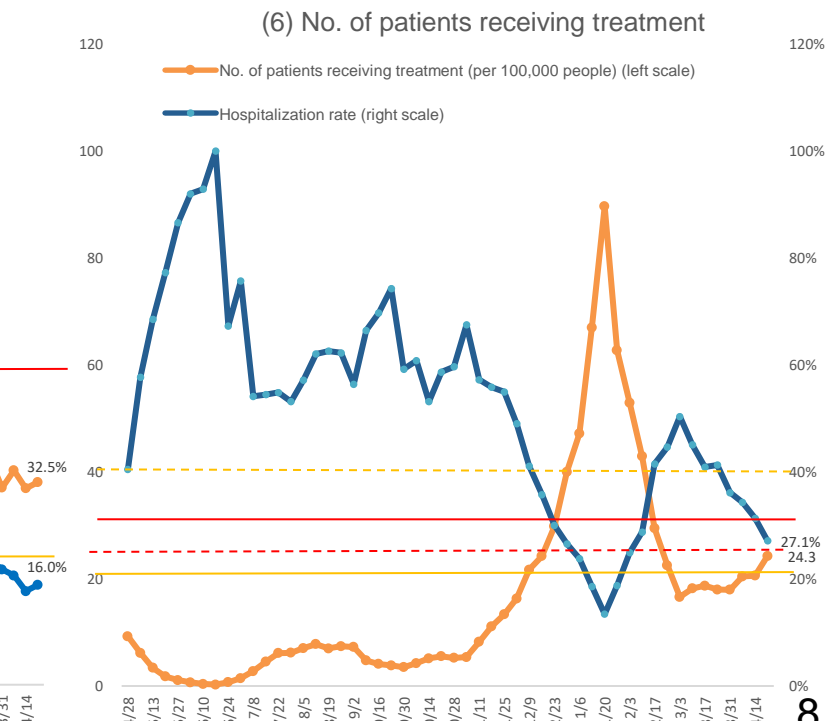
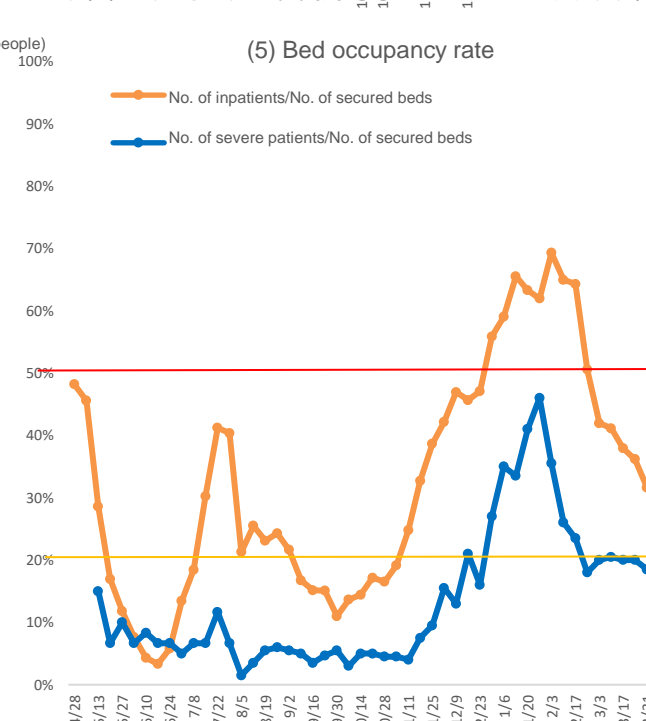
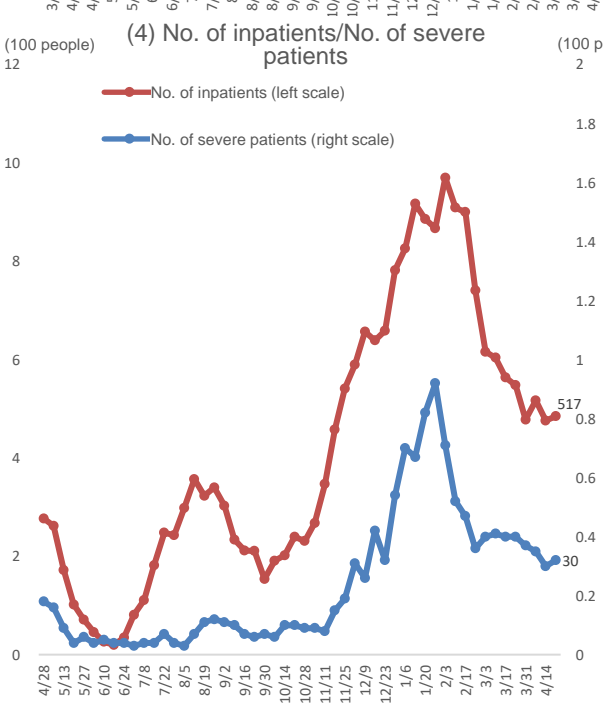
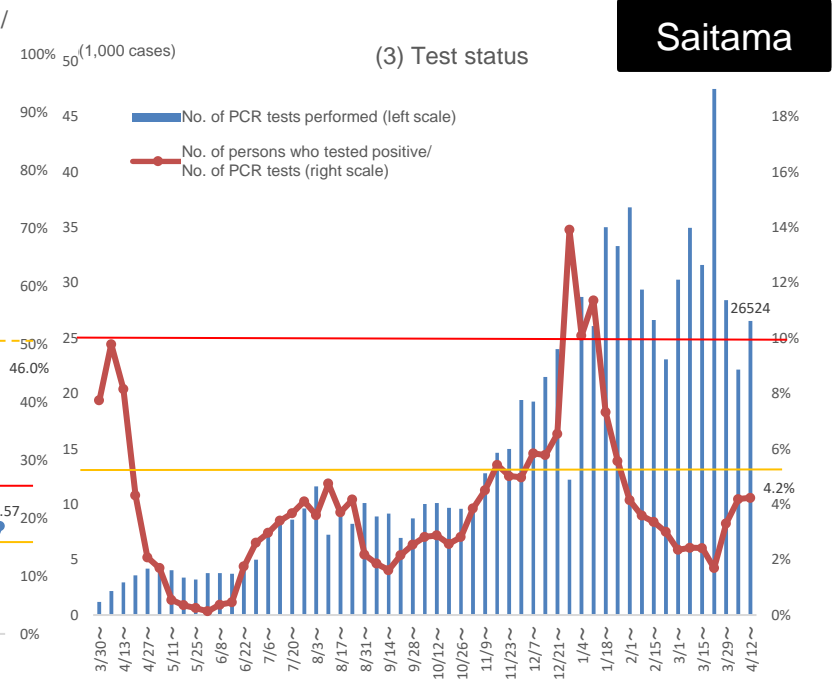
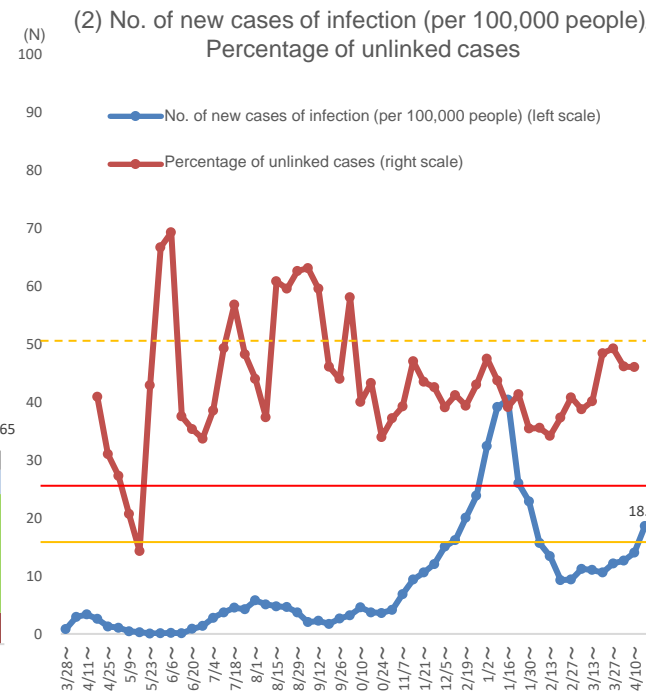
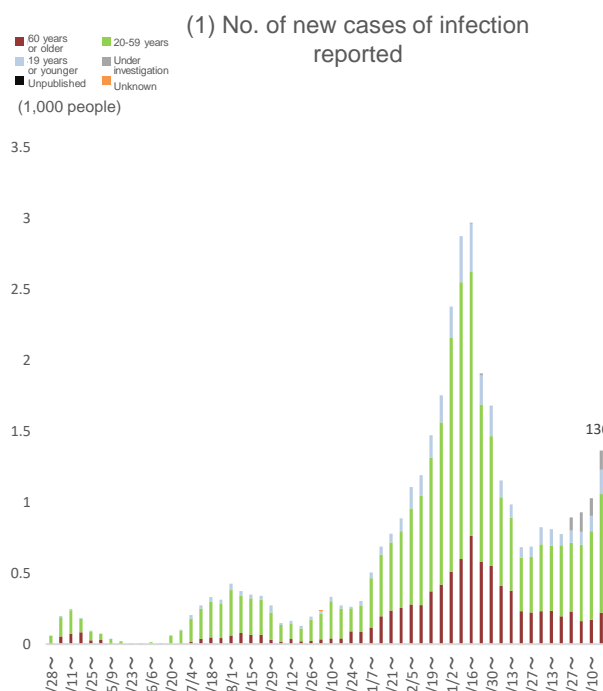
*“Trends in the numbers of inpatients” are based on the “Surveillance of the Status of Care for Patients with the Novel Coronavirus Infection and the Number of Beds,” by the Ministry of Health, Labour and Welfare. In this surveillance, the results as of 0:00 on the presentation date are published.

↑, ↓, and → indicate an increase, a decrease, and the same level, respectively, compared to the previous week.

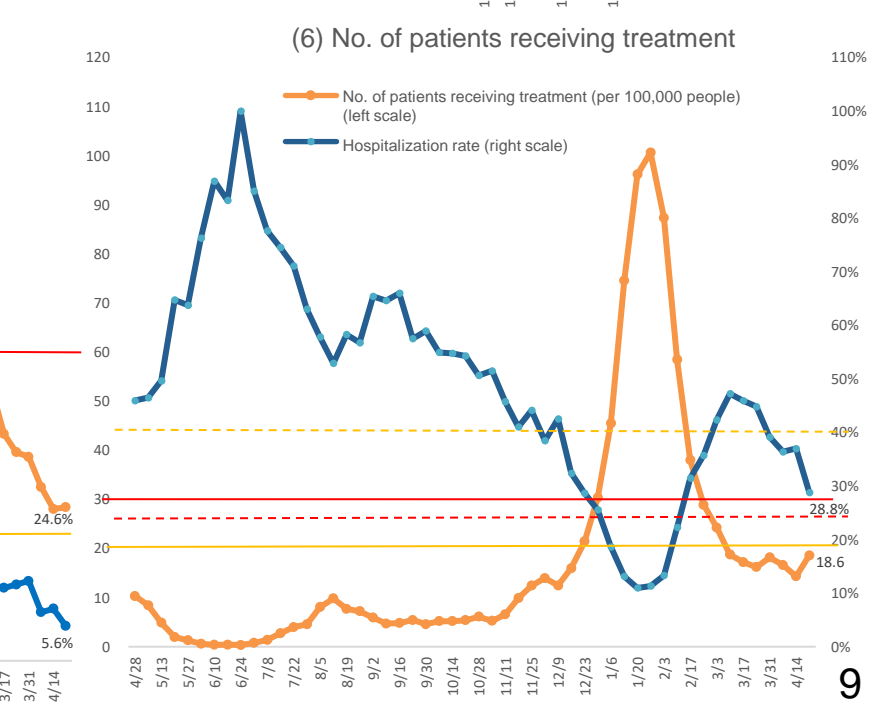
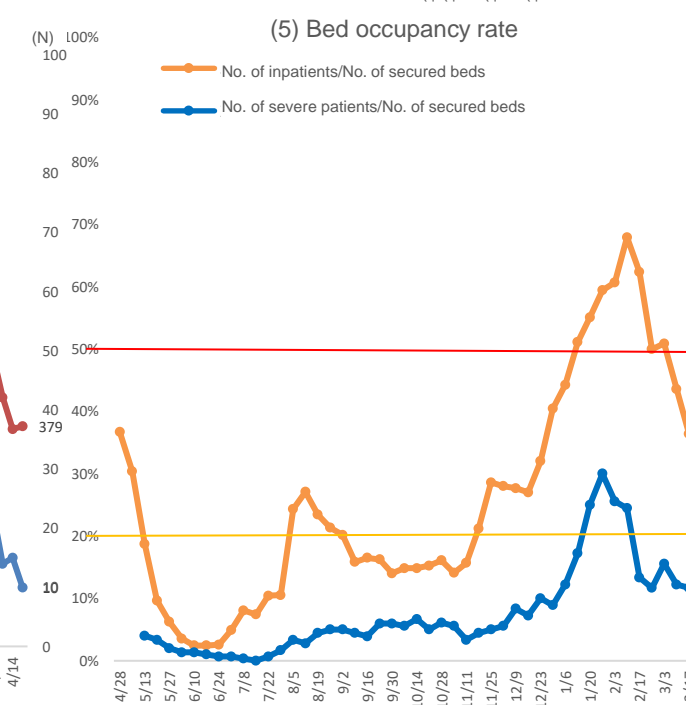
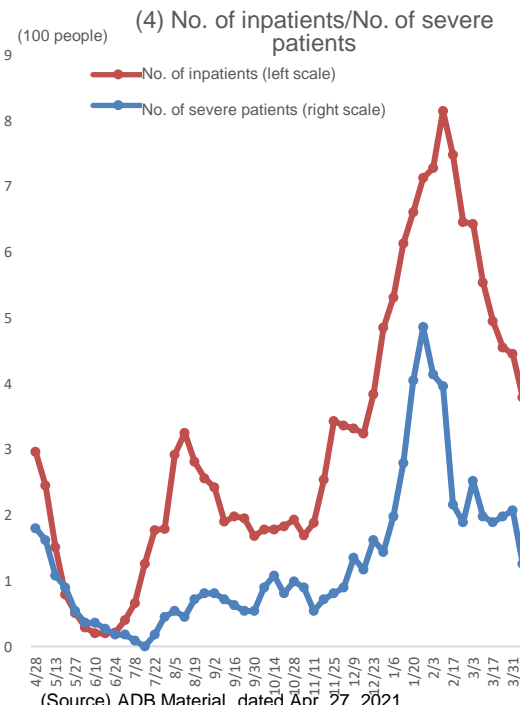
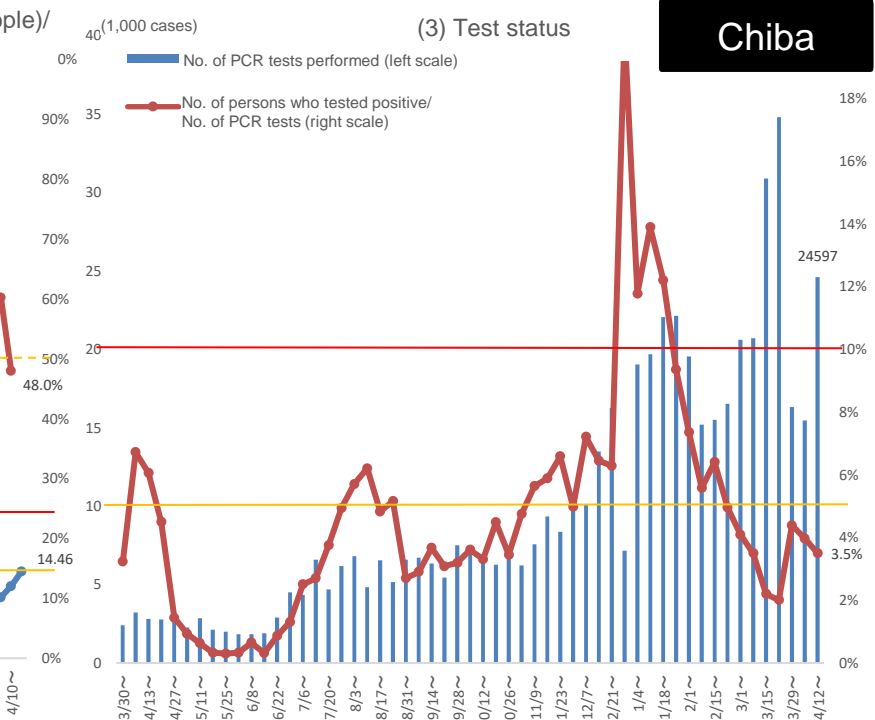
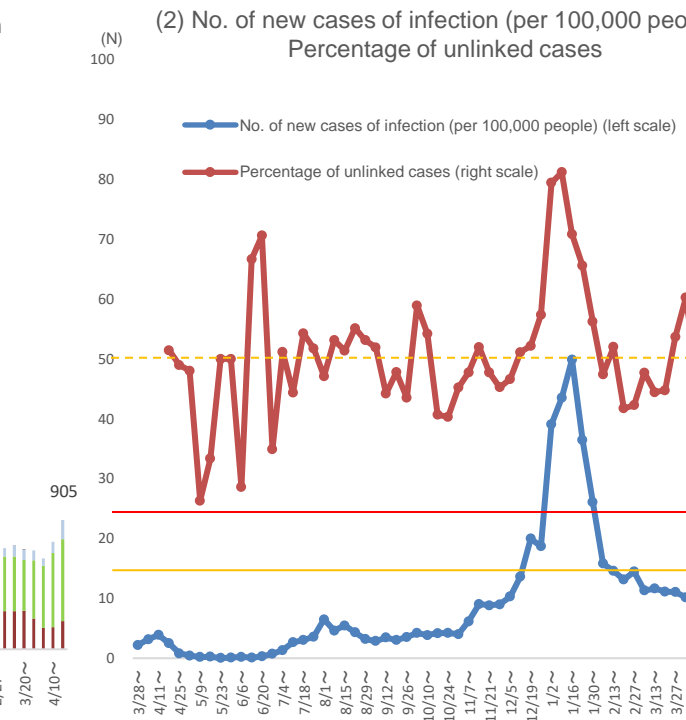
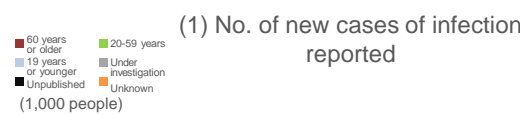




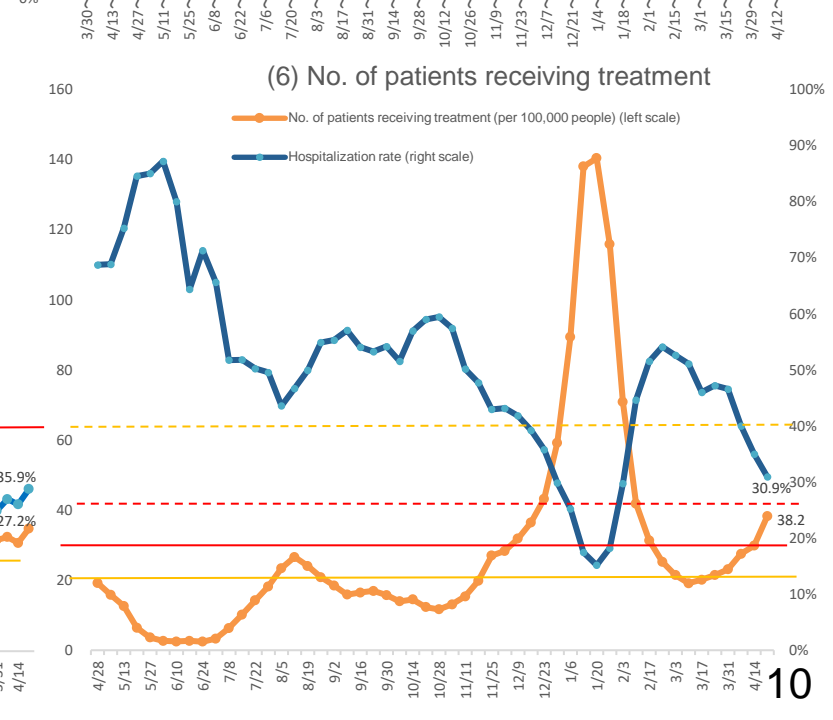
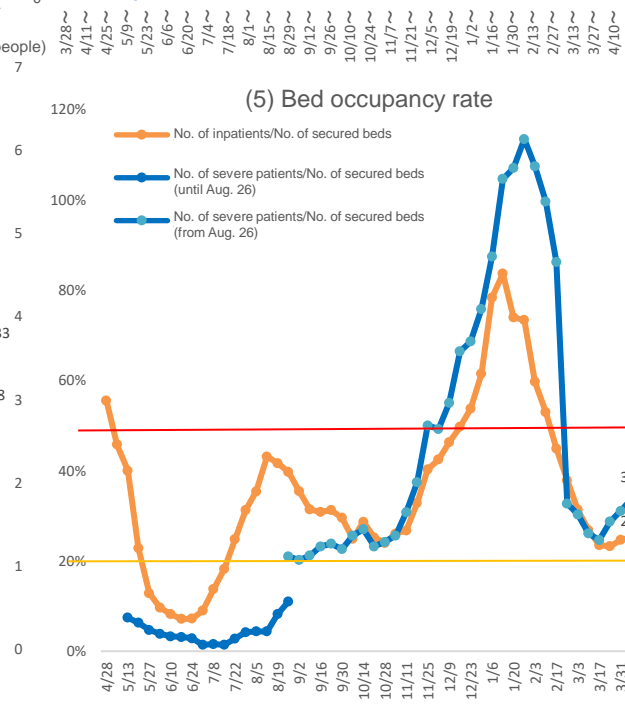
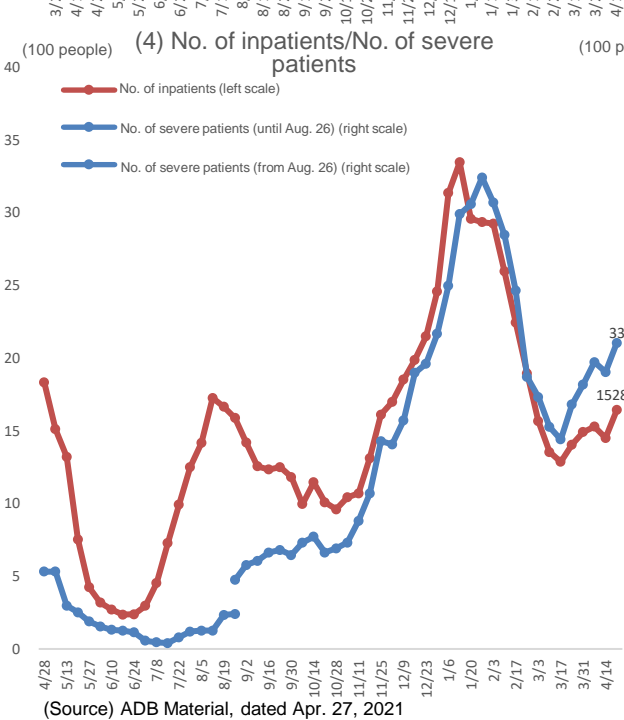
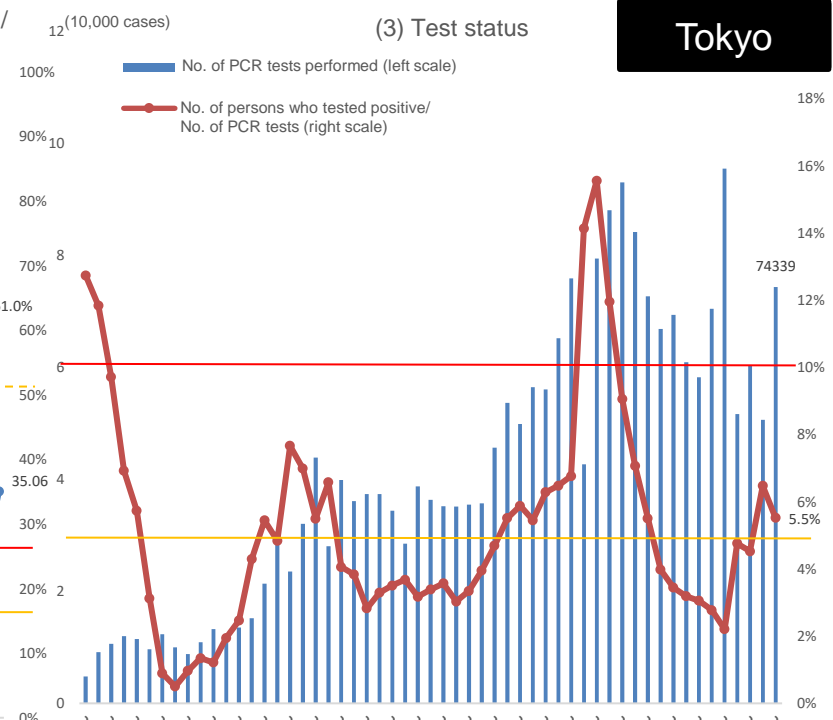
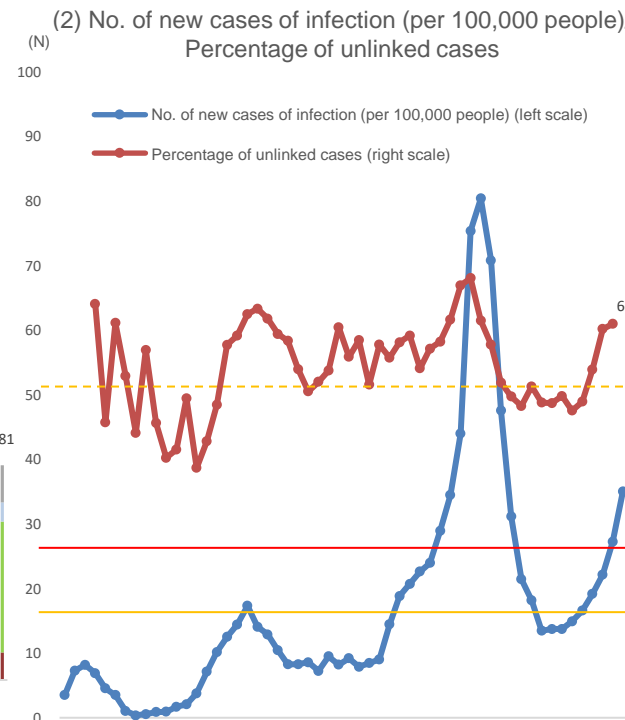
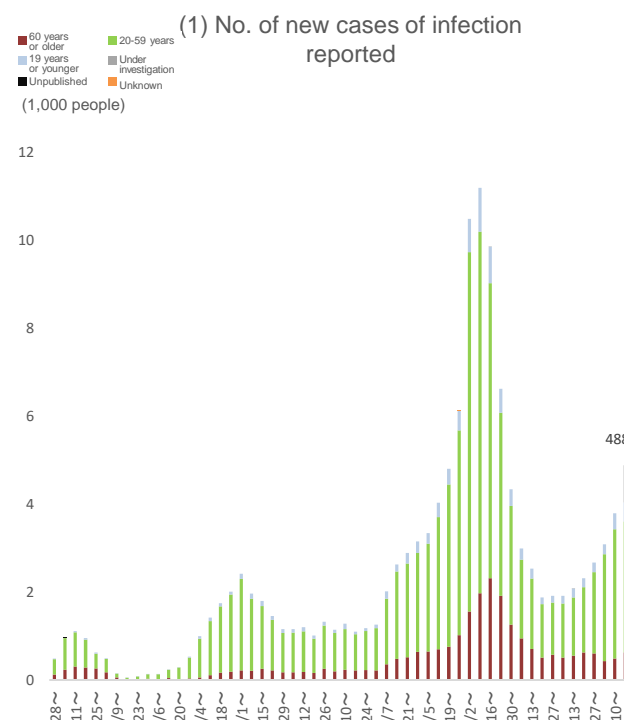
(Source) ADB Material, dated Apr. 27, 2021



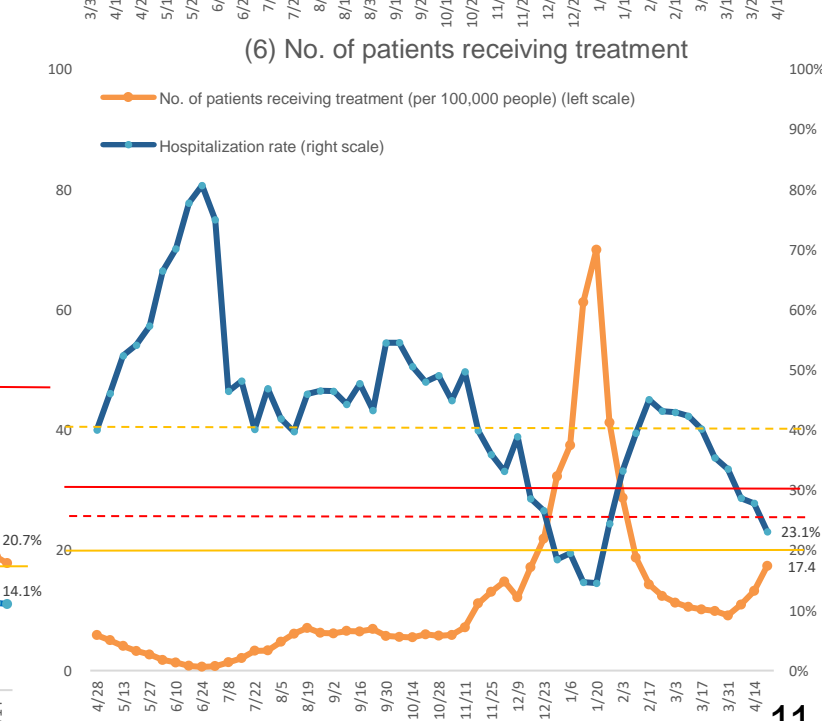
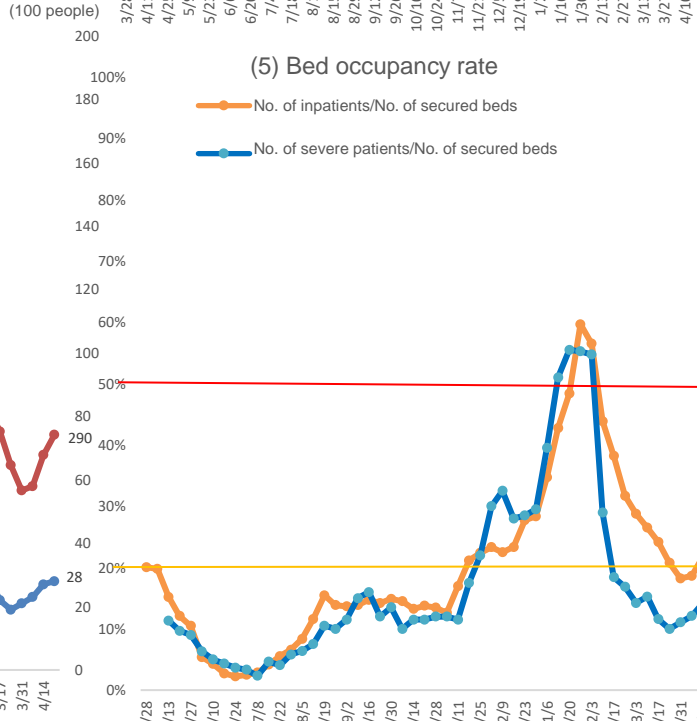
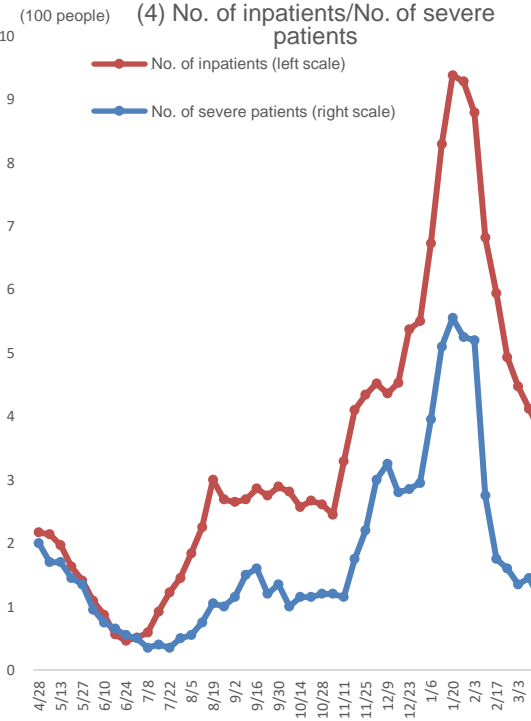
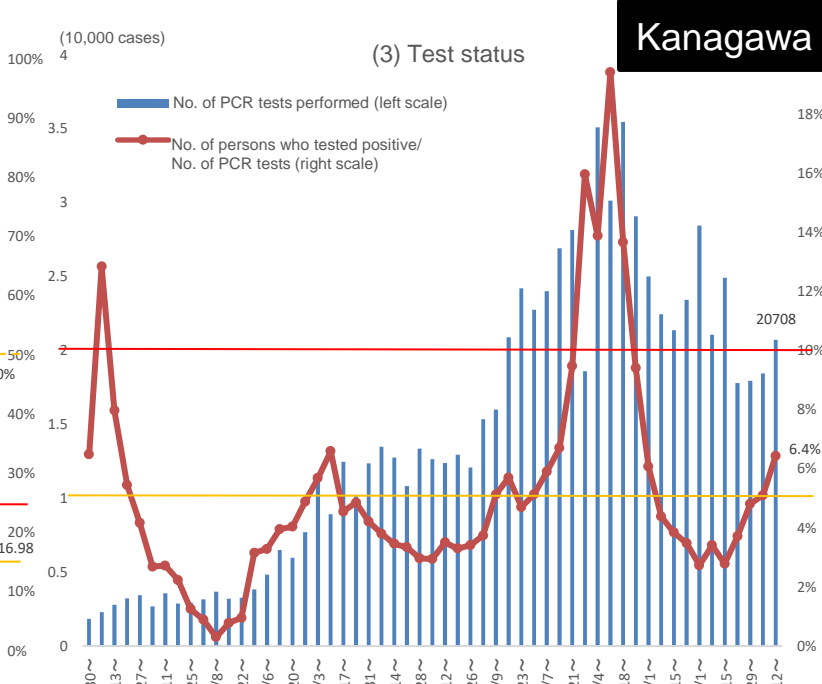
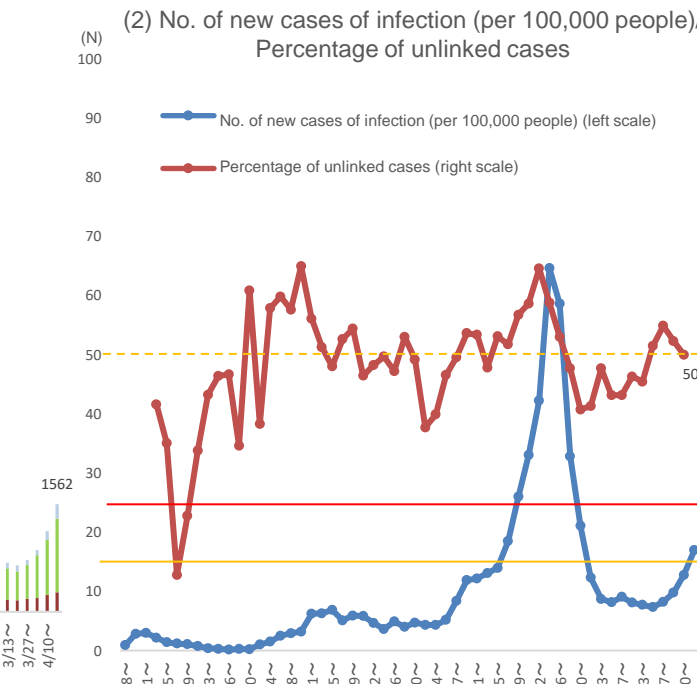
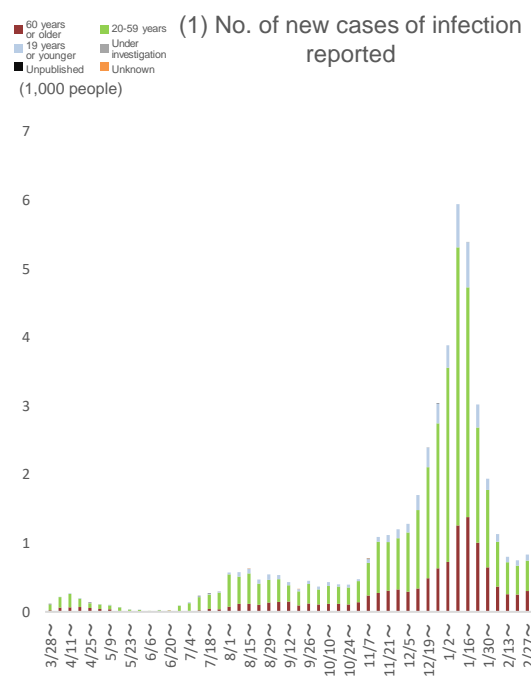
(Source) ADB Material, dated Apr. 27, 2021

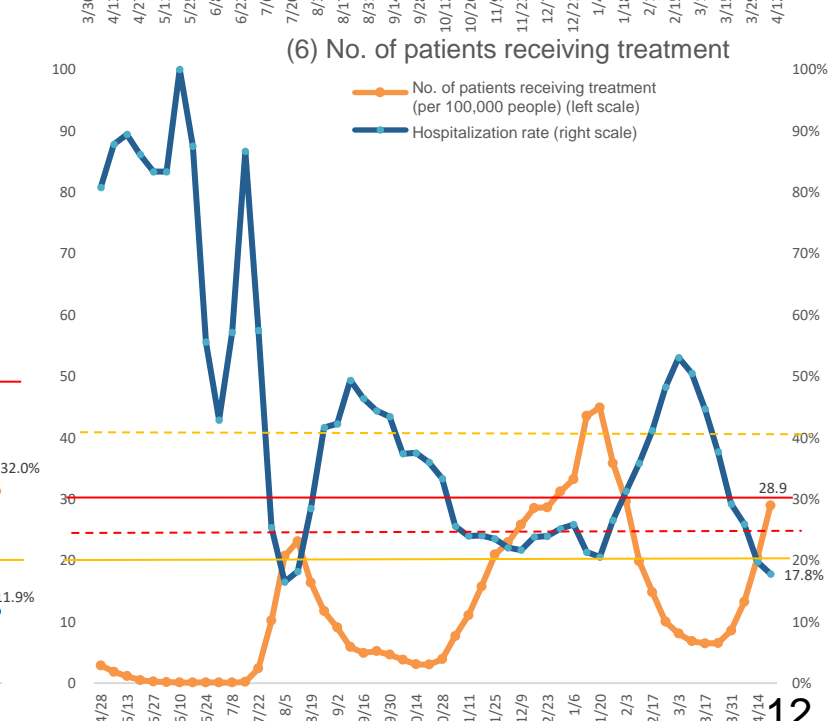
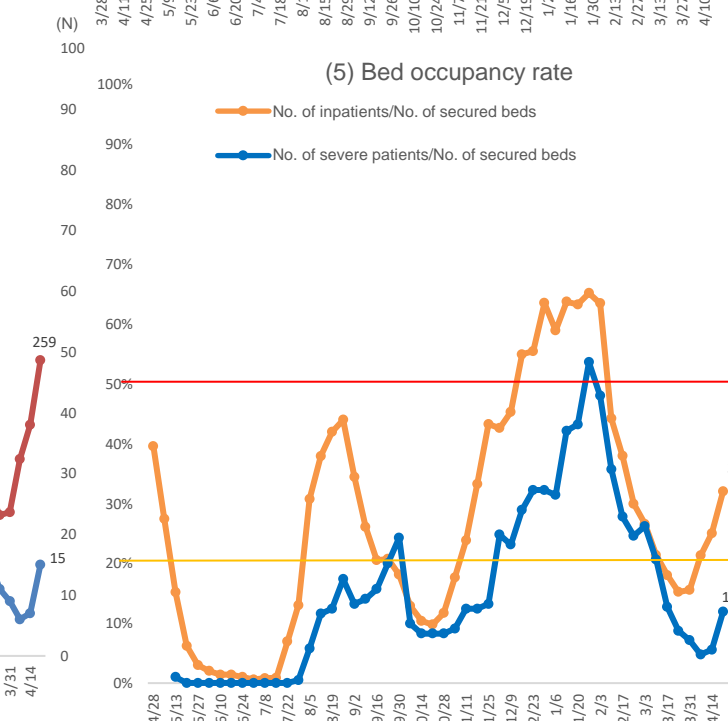
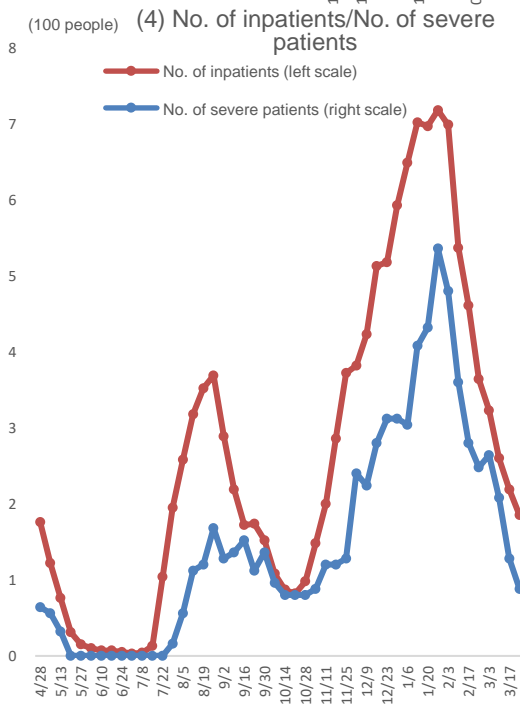
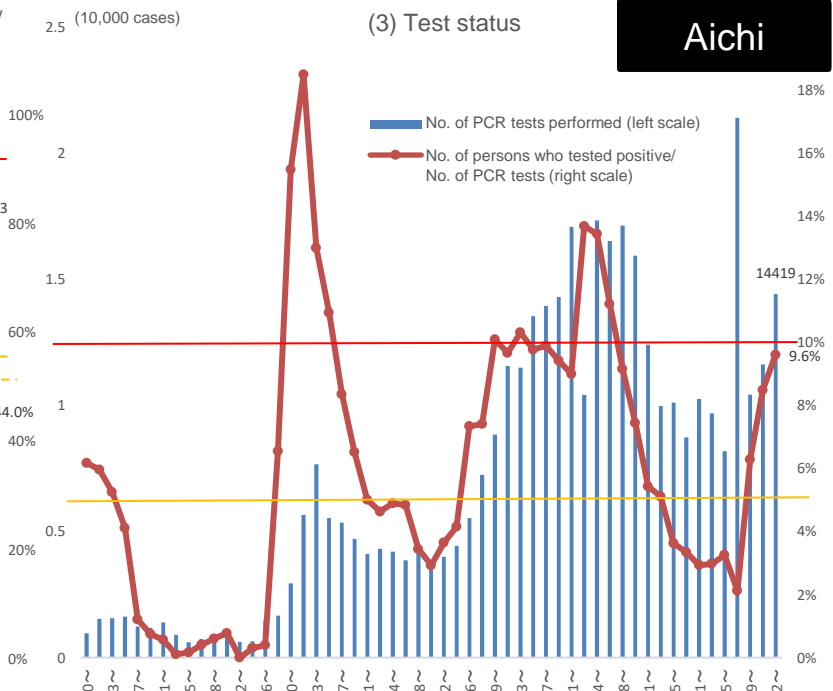
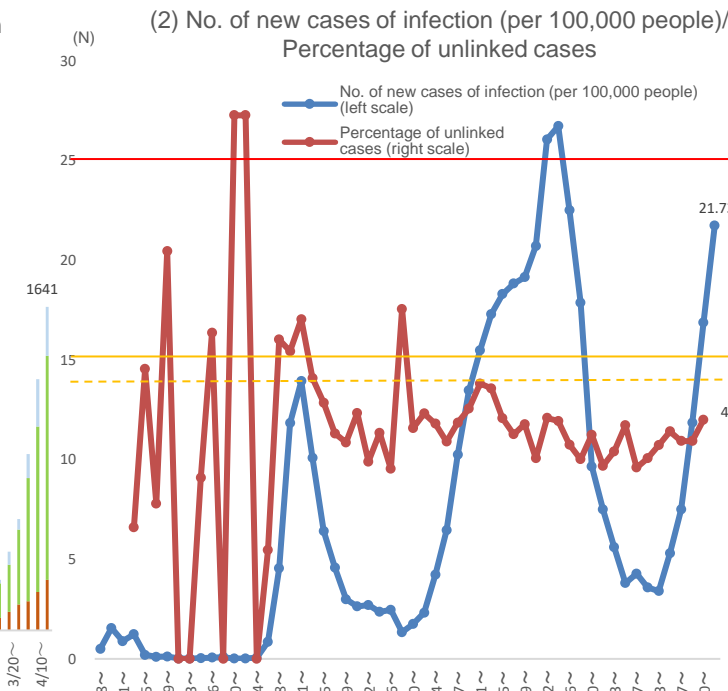
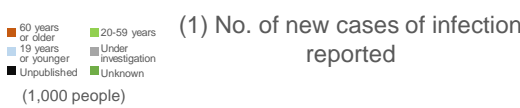


(Source) ADB Material, dated Apr. 27, 2021

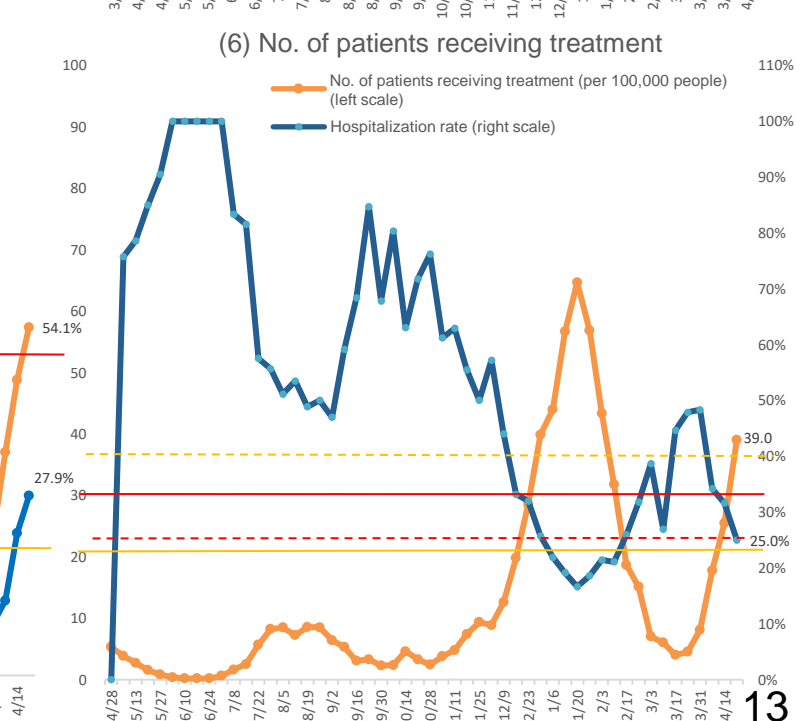
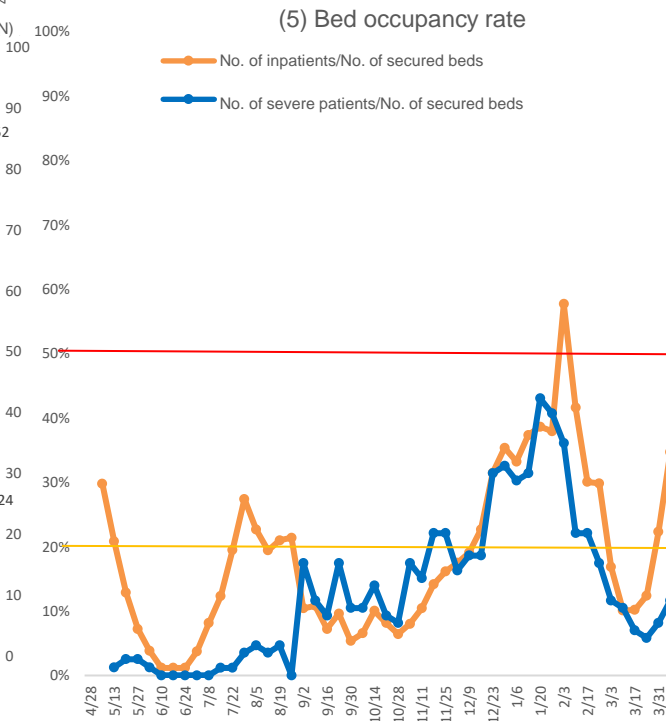
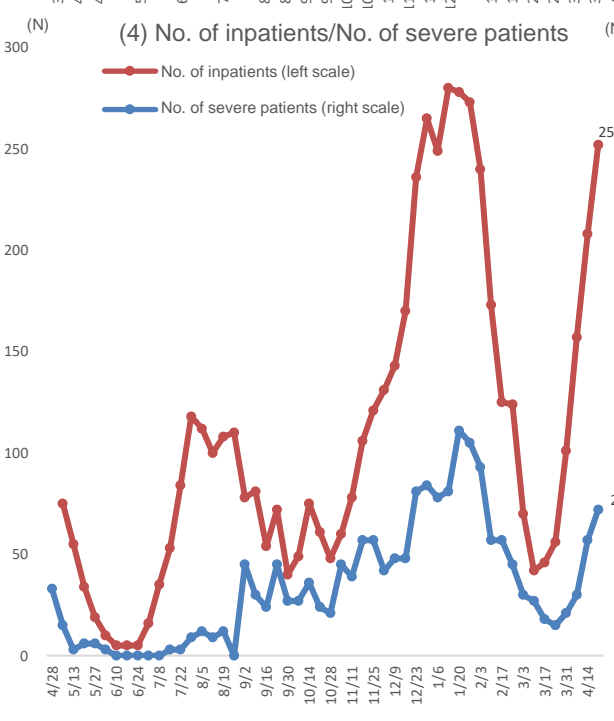
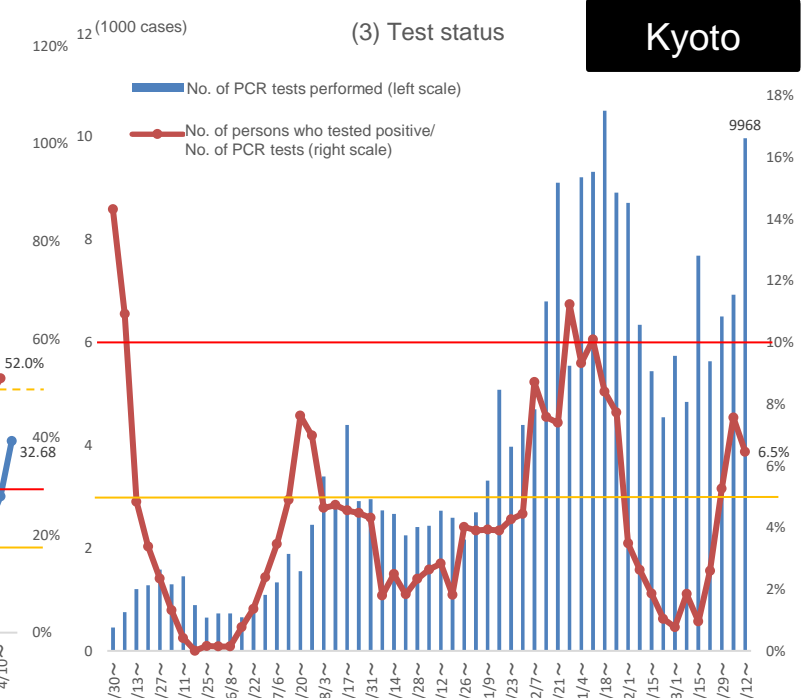
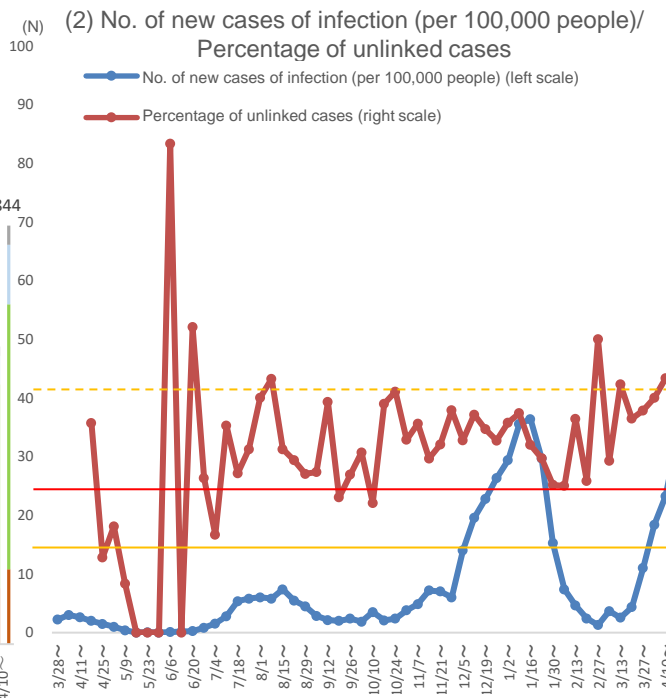
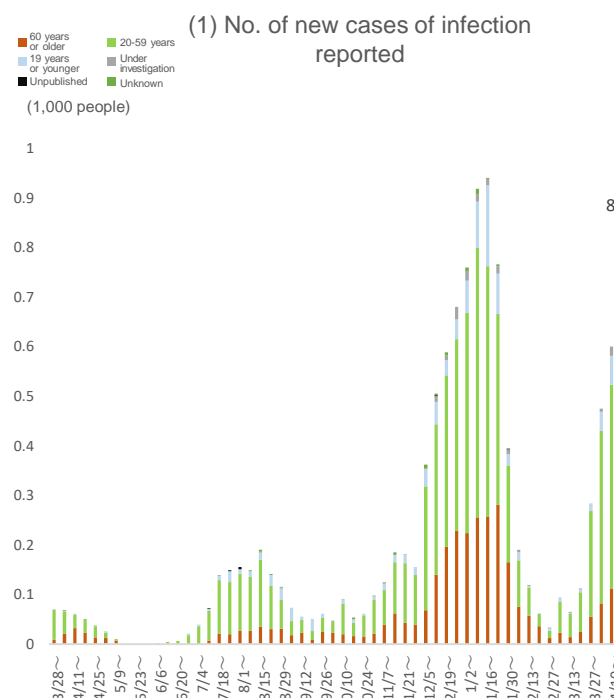


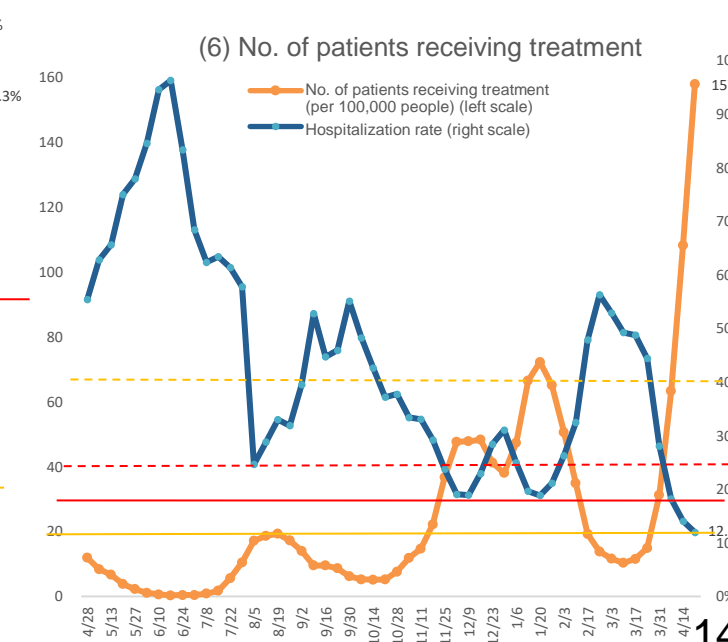
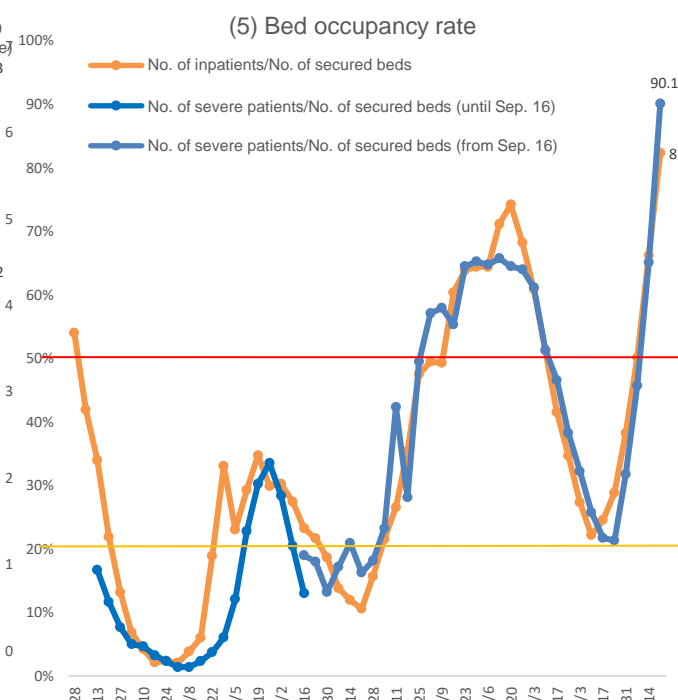
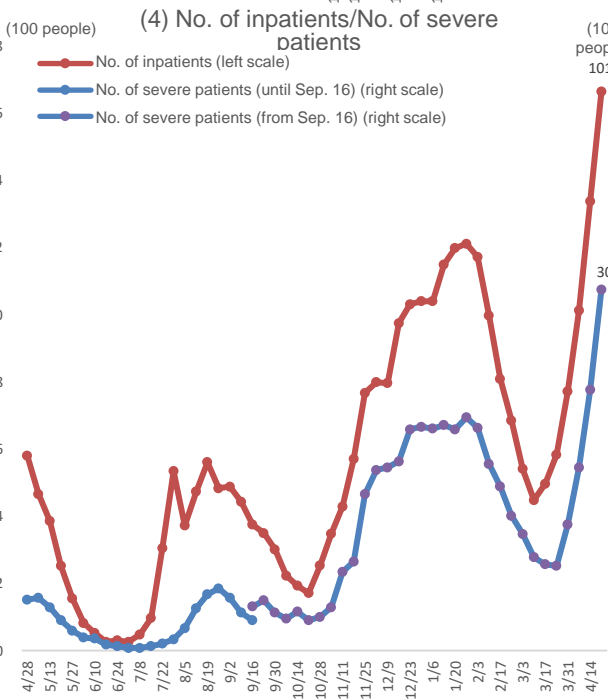
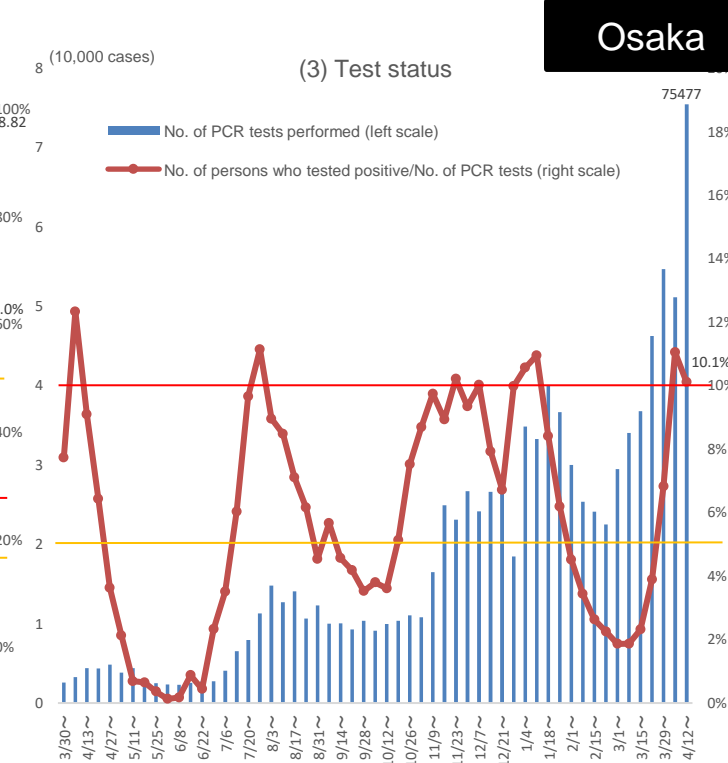
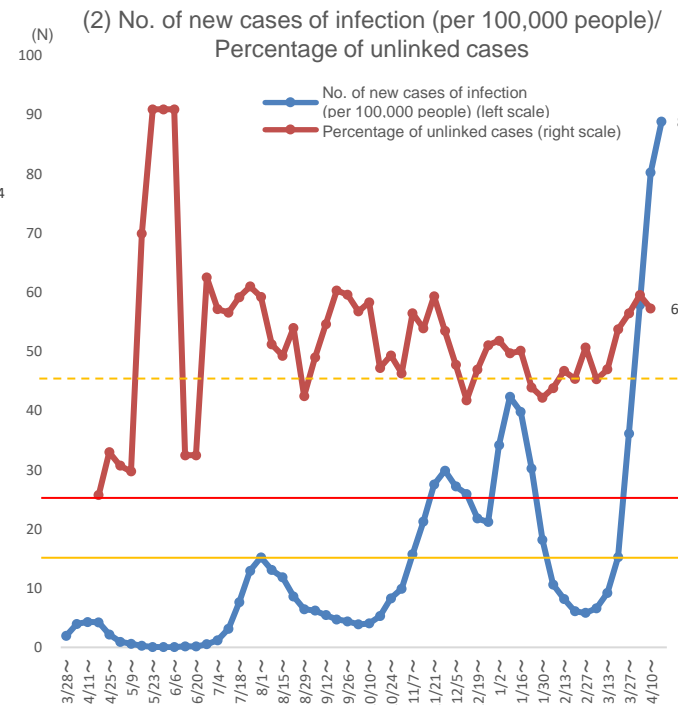
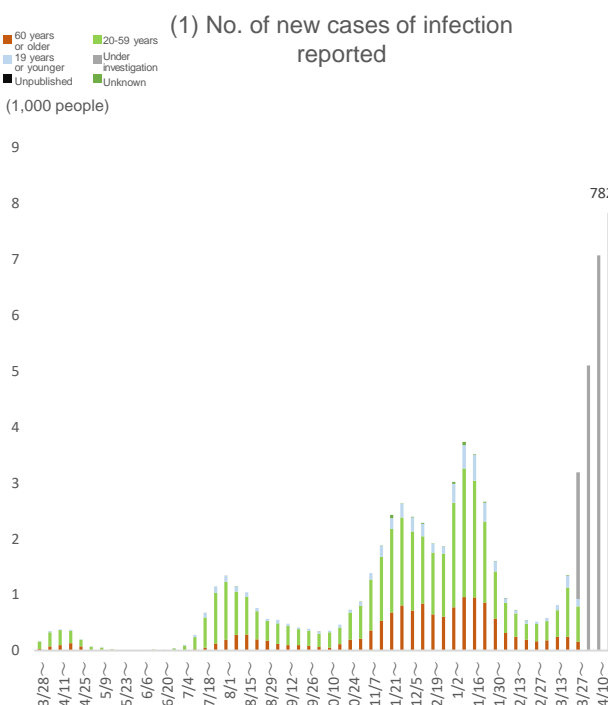
(Source) ADB Material, dated Apr. 27, 2021



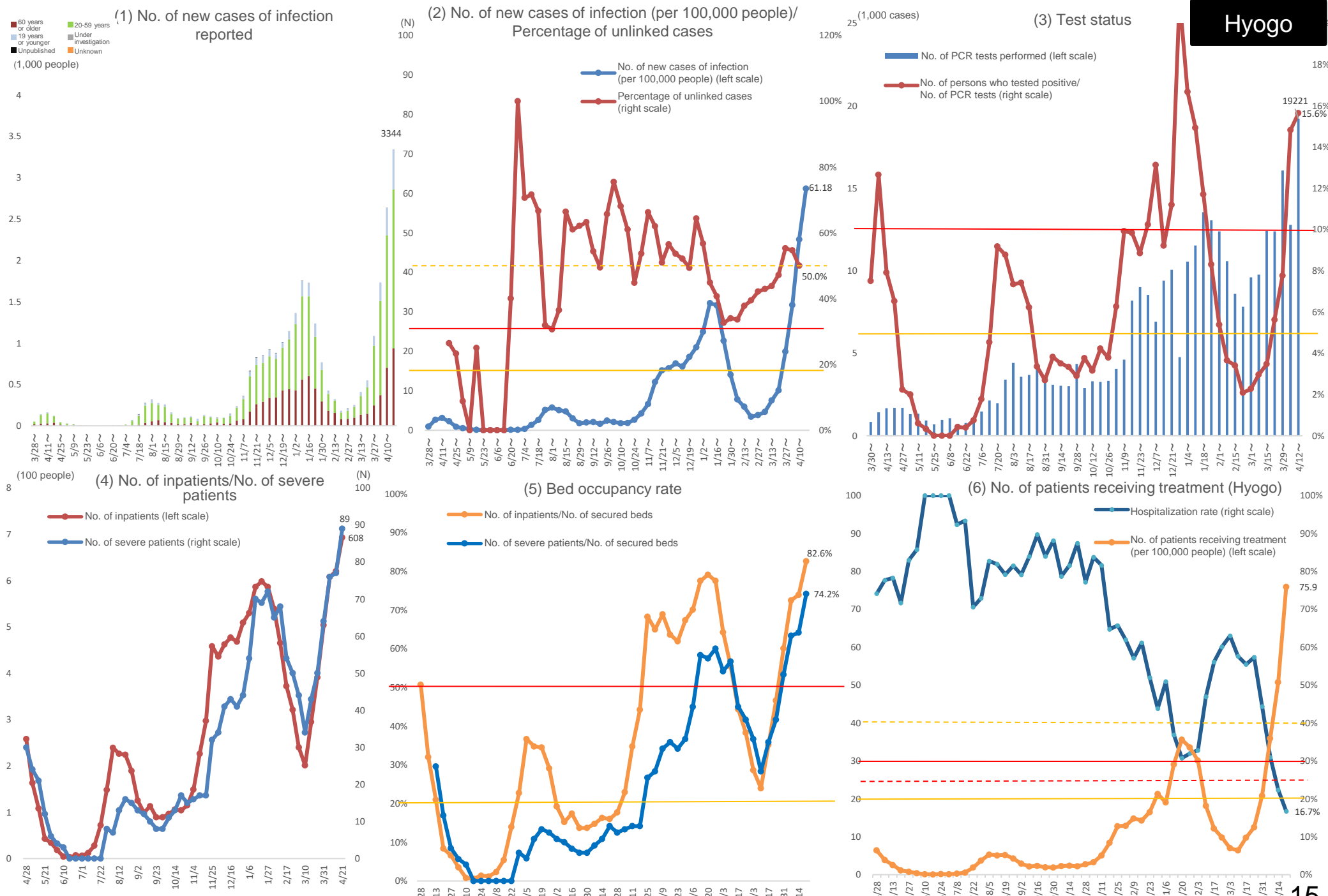


(Source) ADB Material, dated Apr. 27, 2021

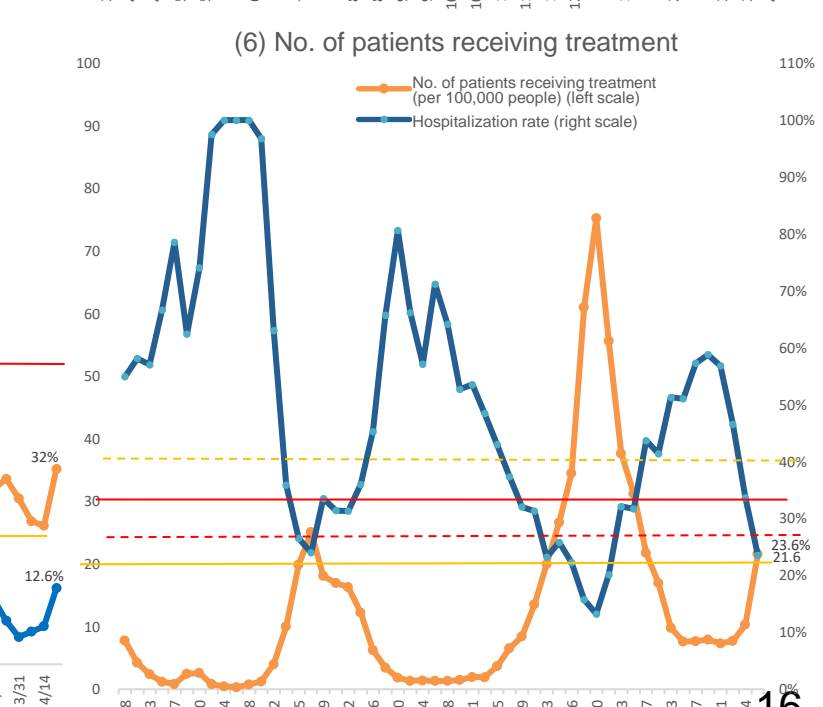
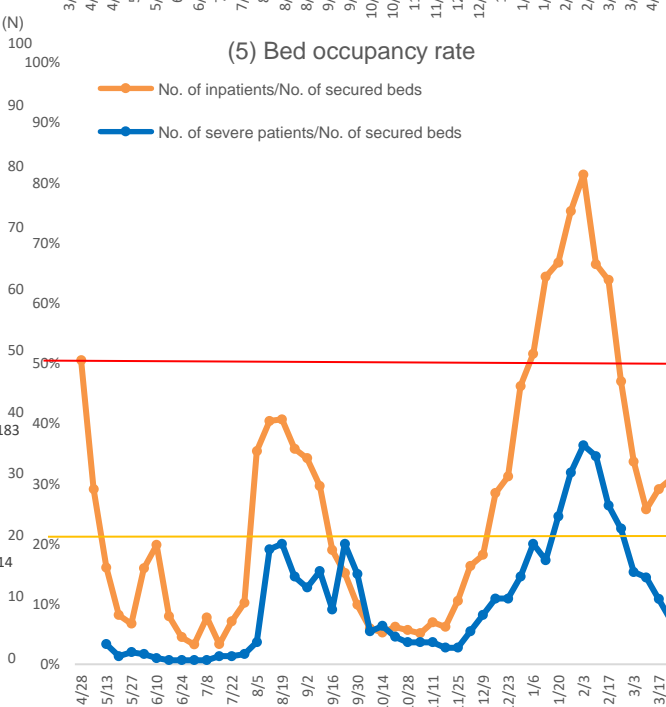
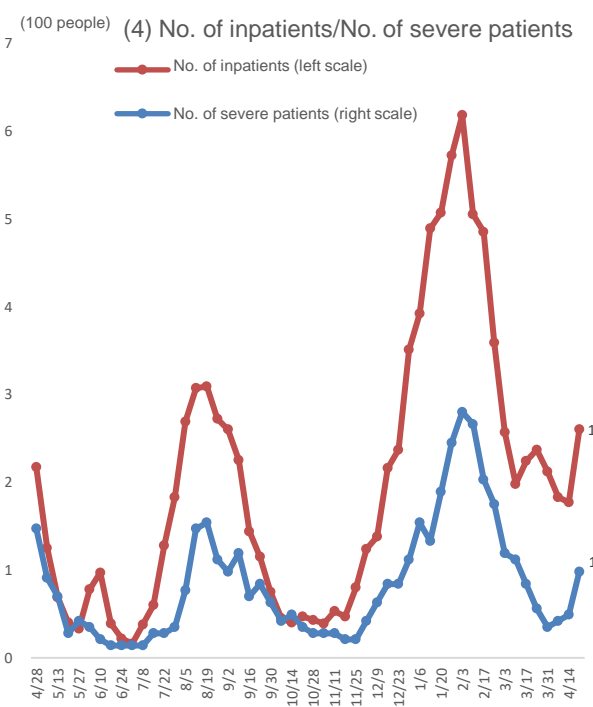
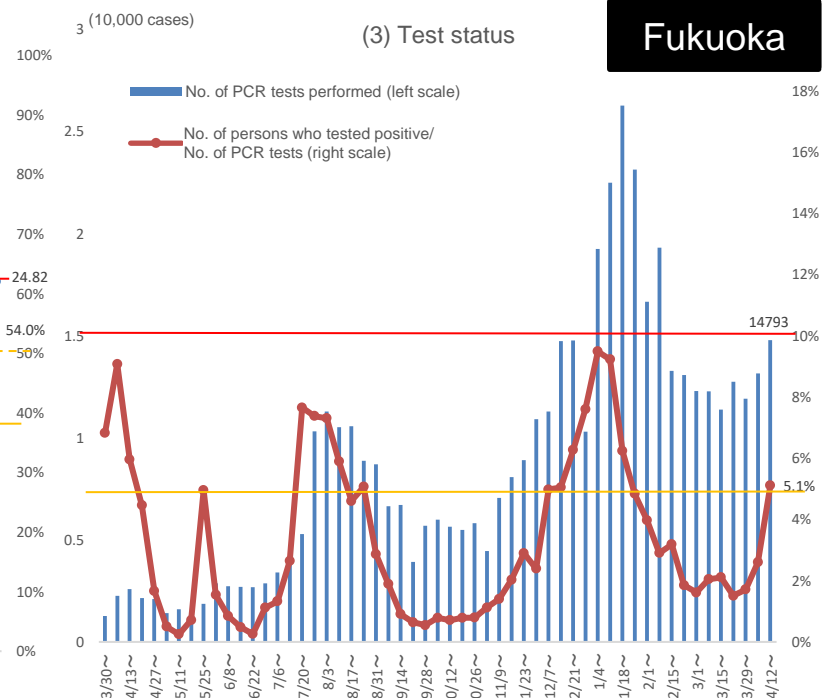
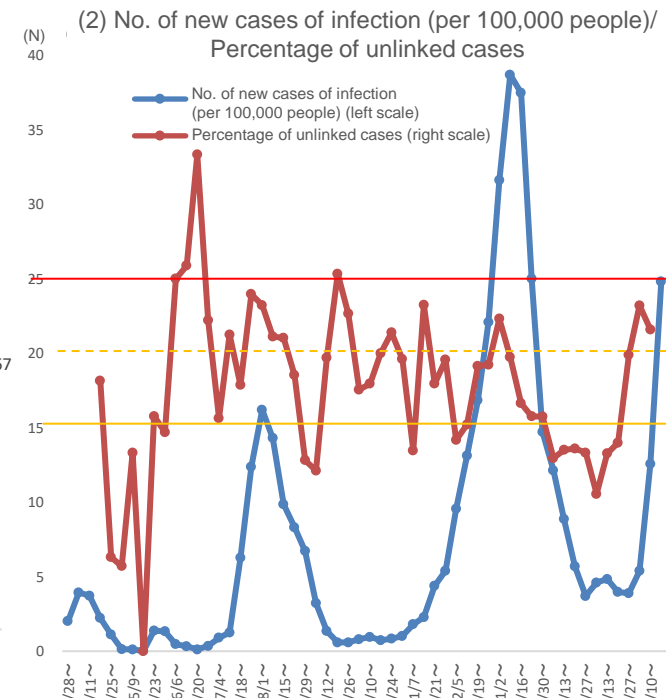
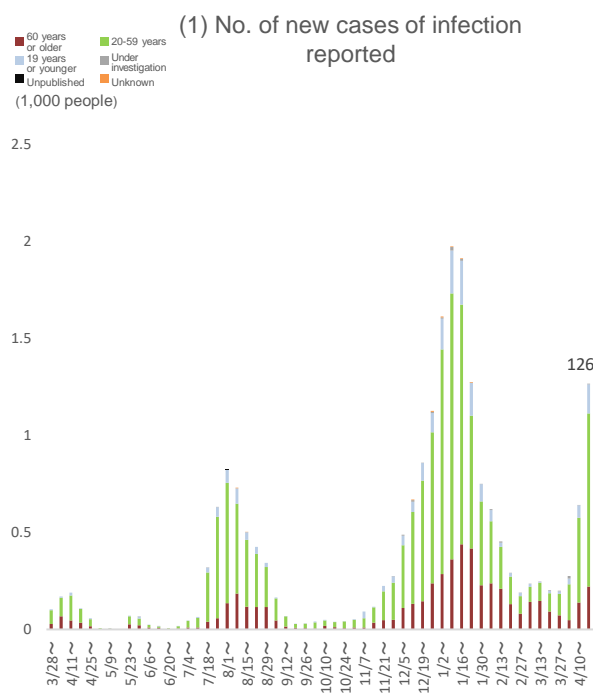




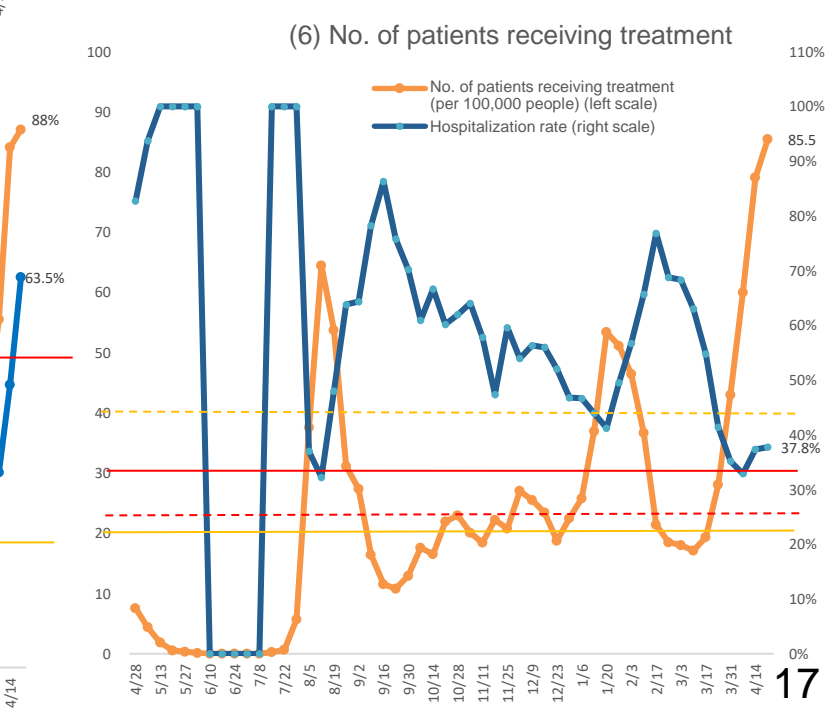
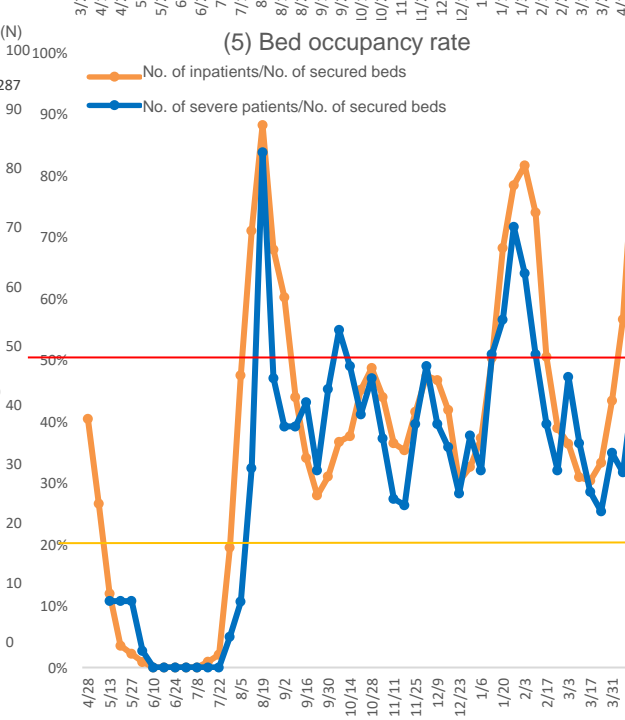
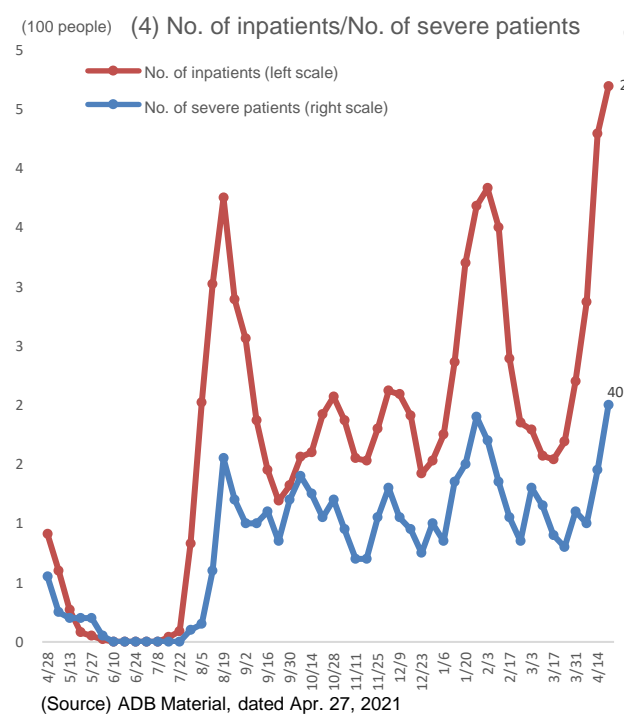
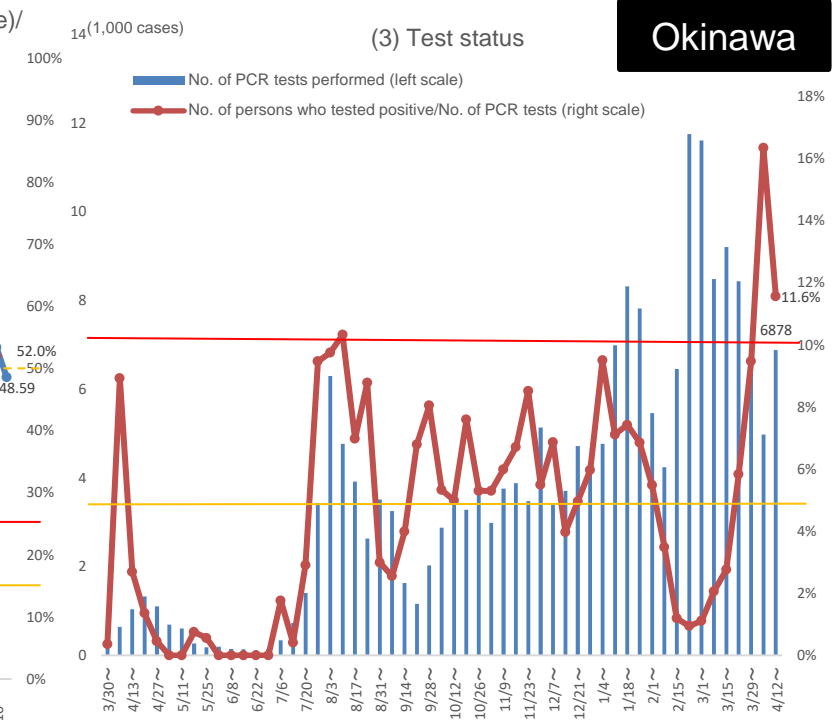
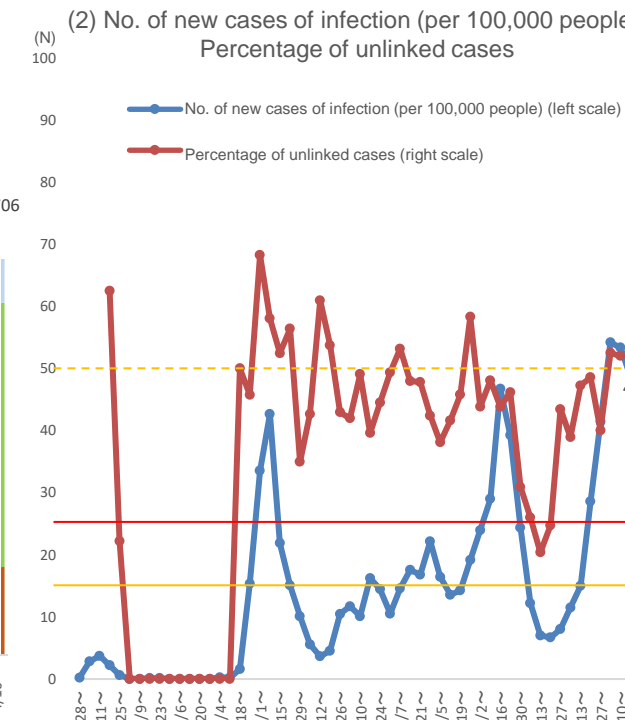
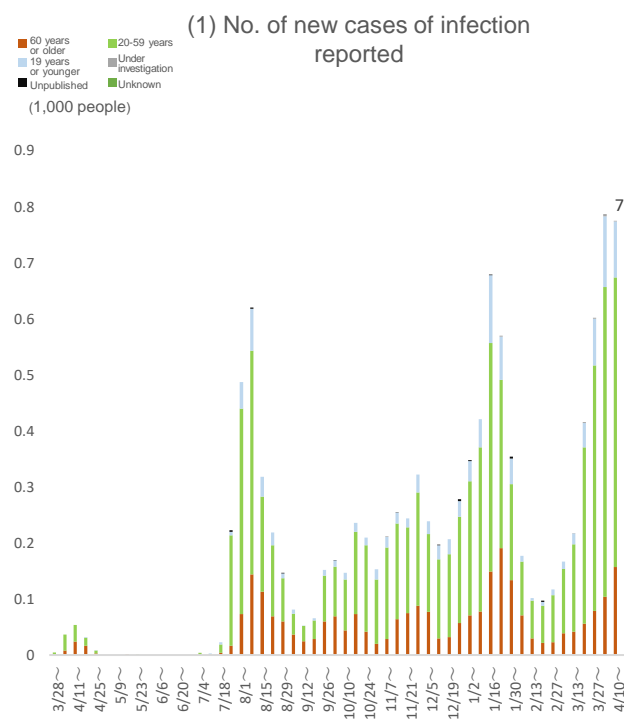
(Source) ADB Material, dated Apr. 27, 2021



(Source) ADB Material, dated Apr. 27, 2021



(Source) ADB Material, dated Apr. 27, 2021



(Source) ADB Material, dated Apr. 27, 2021